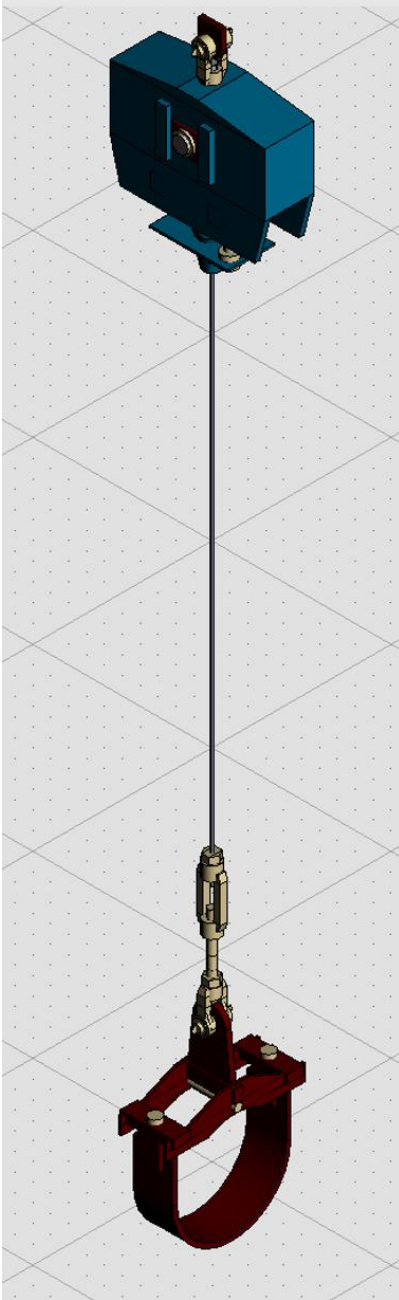


LISEGA addin
for
MicroStation CONNECT



Version 11.1.0.9

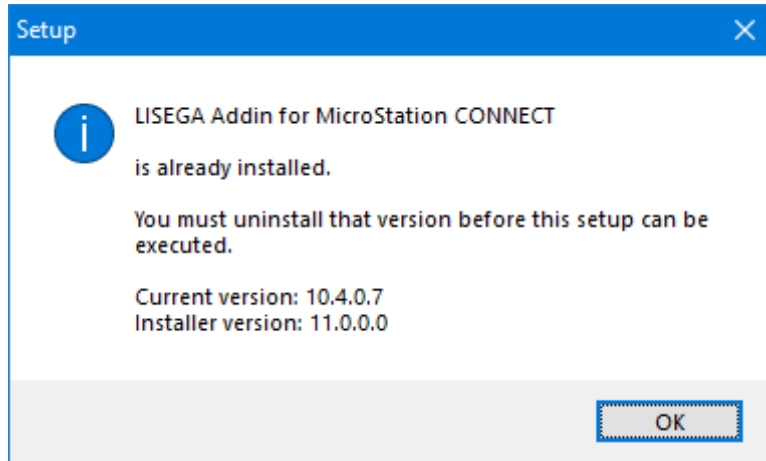
Table of content

Installation.....	3
Add-In Configuration.....	5
Uninstallation	6
GUI modification	7
Key-ins	7
Support and part information	8
Create report with LISEGA support information	10
Addin functions	16
Import of L3D files	16
Place a single part from catalog	17
Addin settings.....	17
Interactive support placement (Run LICAD).....	18
Configurations available	18

Installation

Close MicroStation CONNECT before you start the installation.

Any normal previous installation is recognized and the setup stops:



So, please use the Windows uninstall functionality to remove that version first!

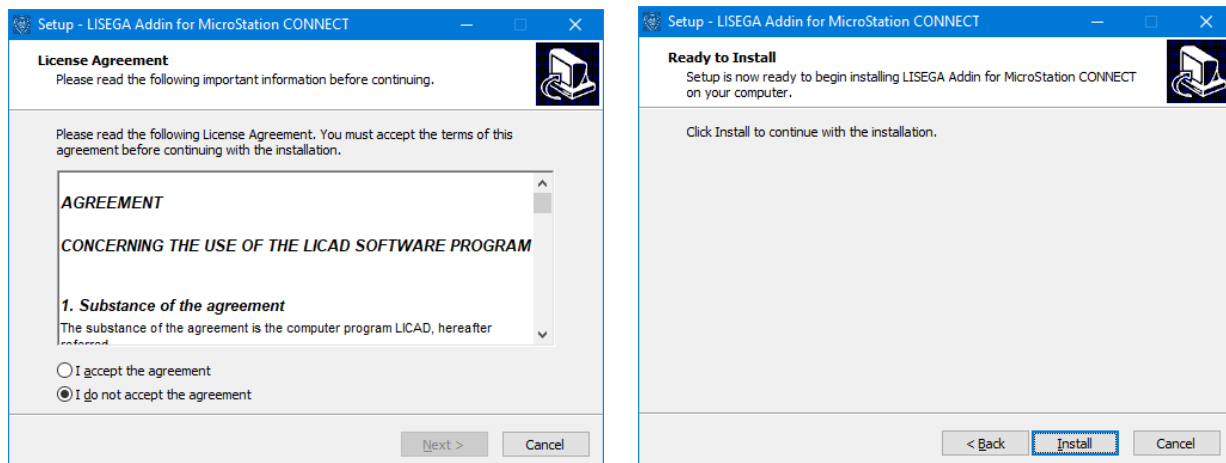
Execute the installation program “LisegaAddin_11.1.0.9_for_MicroStation_CONNECT.exe”

The installer will copy the required files to the following folders:

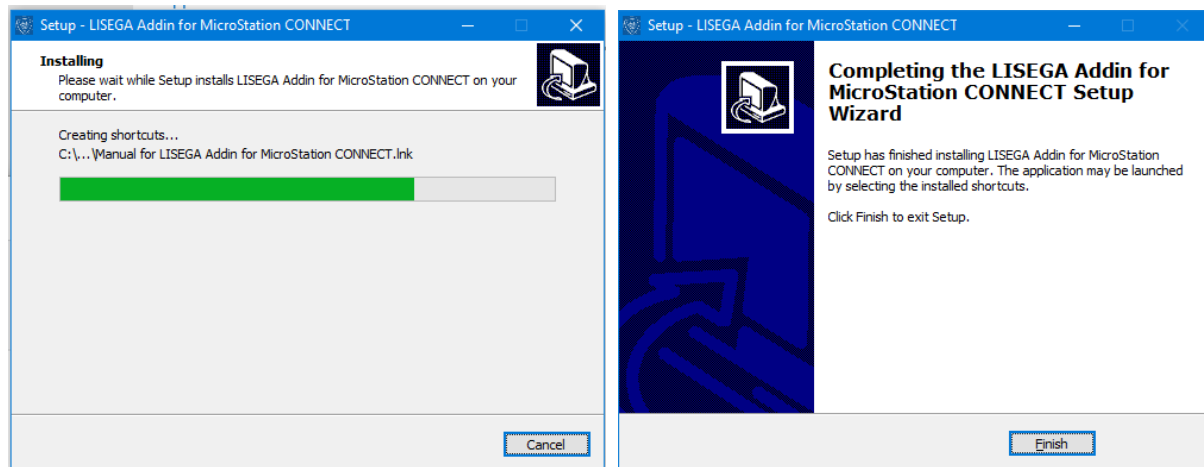
- \${MSDIR}\Mdlapps\LisegaAddin*.*
- \${MSDIR}\config\appl\LisegaAddin.cfg

The installation is developed for easy installation without the need to specify the destination folders. The required information is taken from the MicroStation CONNECT installation.

It's only required to accept the license agreement.



The installation will start after pressing the “Install” button.

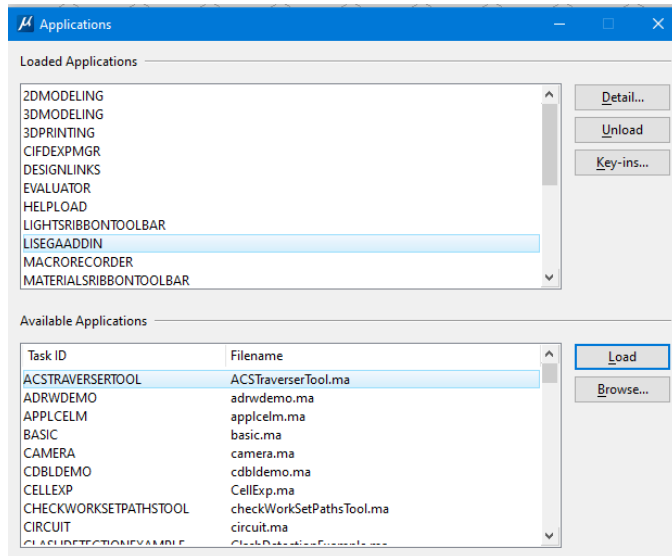


Add-In Configuration

There is nothing to configure!

The LISEGA add-in will automatically be loaded when MicroStation CONNECT starts.

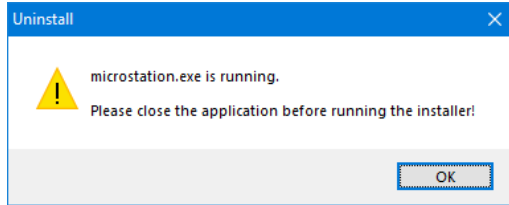
The task ID is "LISEGAADDIN".



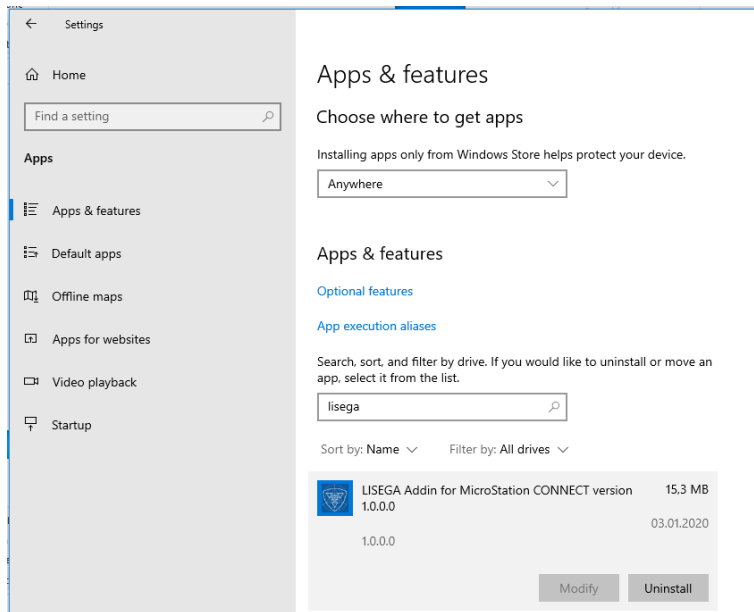
Uninstallation

Close MicroStation CONNECT before starting the uninstallation.

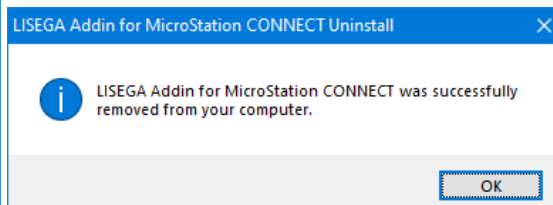
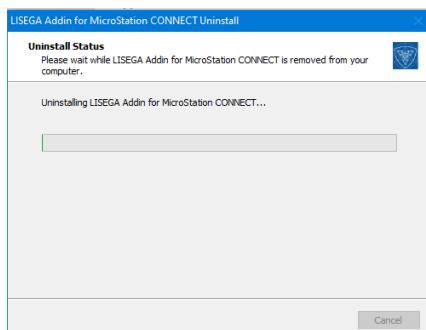
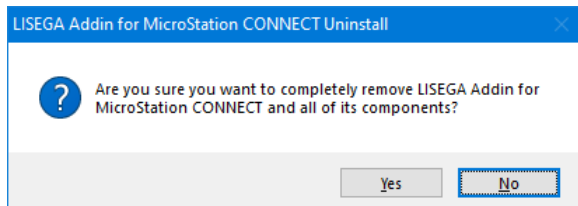
The setup program will check that and abort if MicroStation is running:



To start the uninstall process goto "Windows Settings -> Apps & features"

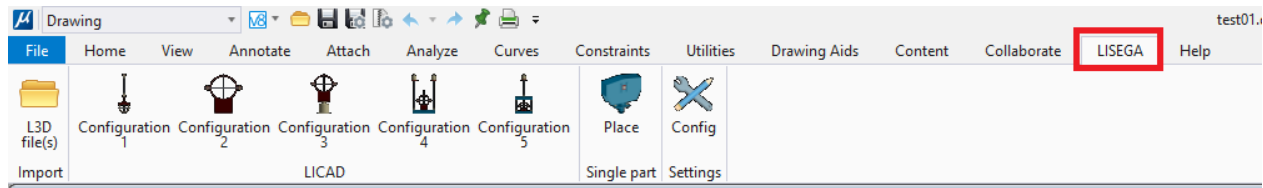


Click "Uninstall" to start the process



GUI modification

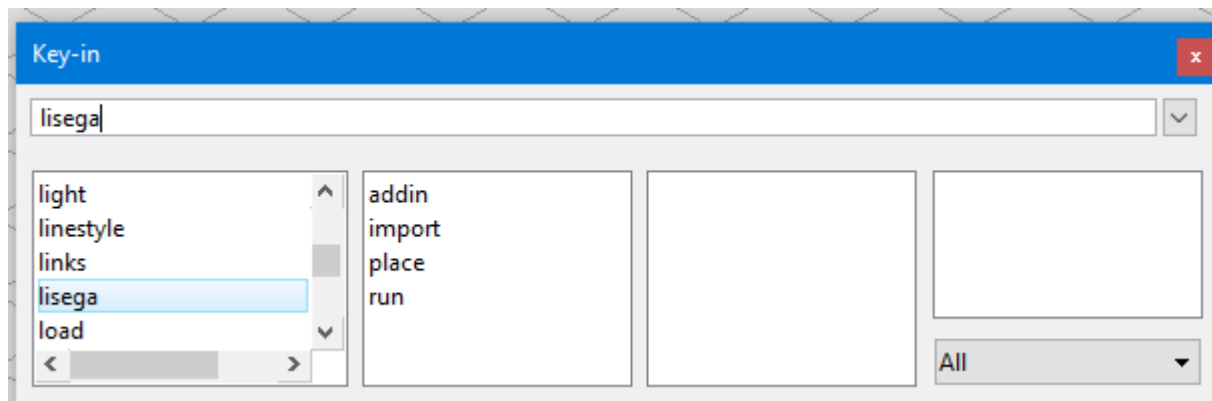
The add-in will add a Ribbon control called “LISEGA” to all tasks. The ribbon include the possible commands.



Key-ins

There are four commands available:

- lisega addin settings
- lisega import l3d
- lisega place part
- lisega run licad

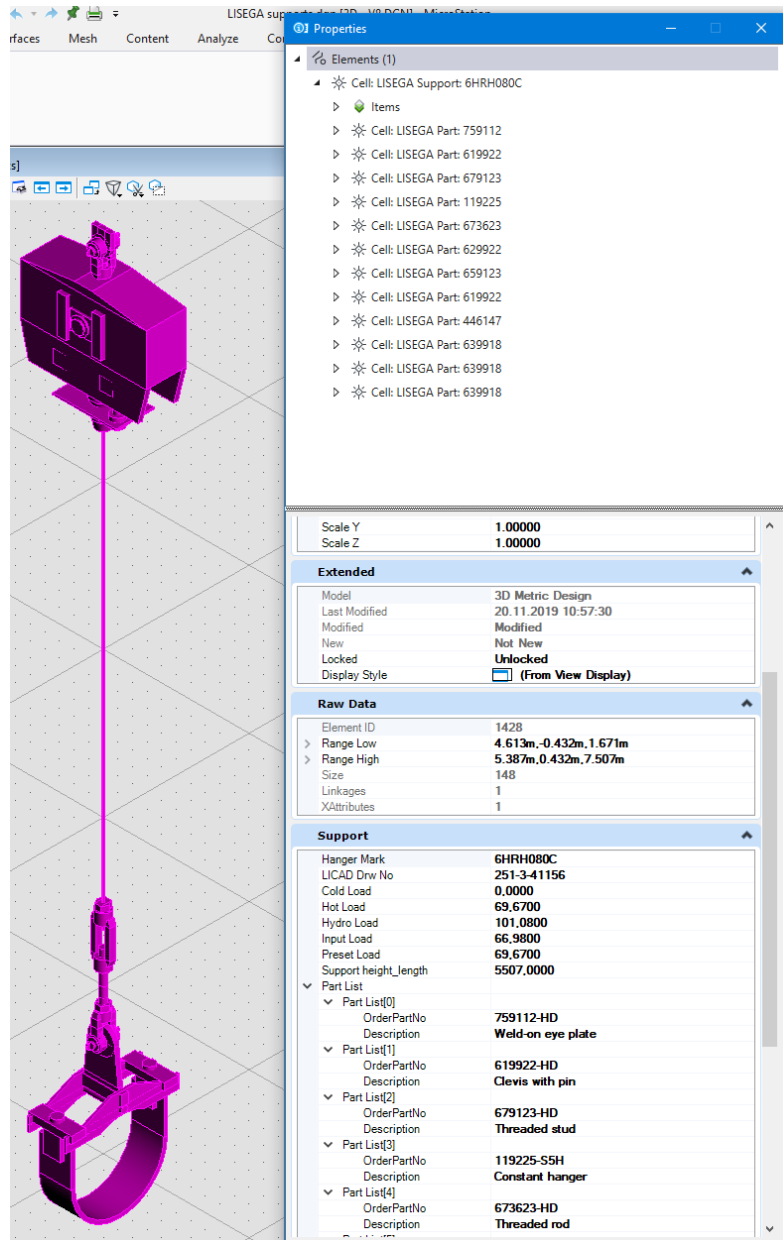


The “lisega run licad” command supports one parameter. The parameter can be a number in the range 1 to 5.

That are the 5 configurations that are possible (Details see ...).

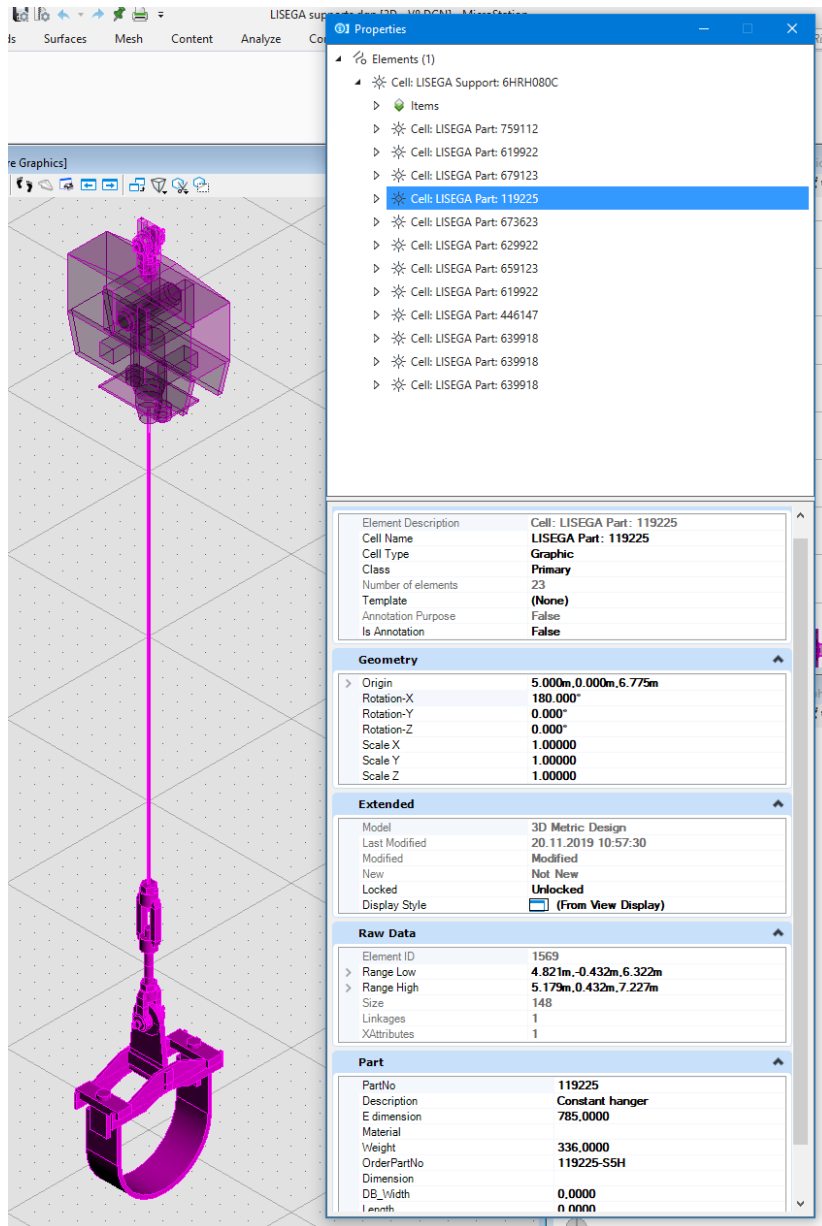
Support and part information

The add-in will store the technical data of the support and part information. MicroStation can show this information.



The support details are shown in the section “Support”

Selecting a part inside a support will show the part details. The constant hanger was selected in this example

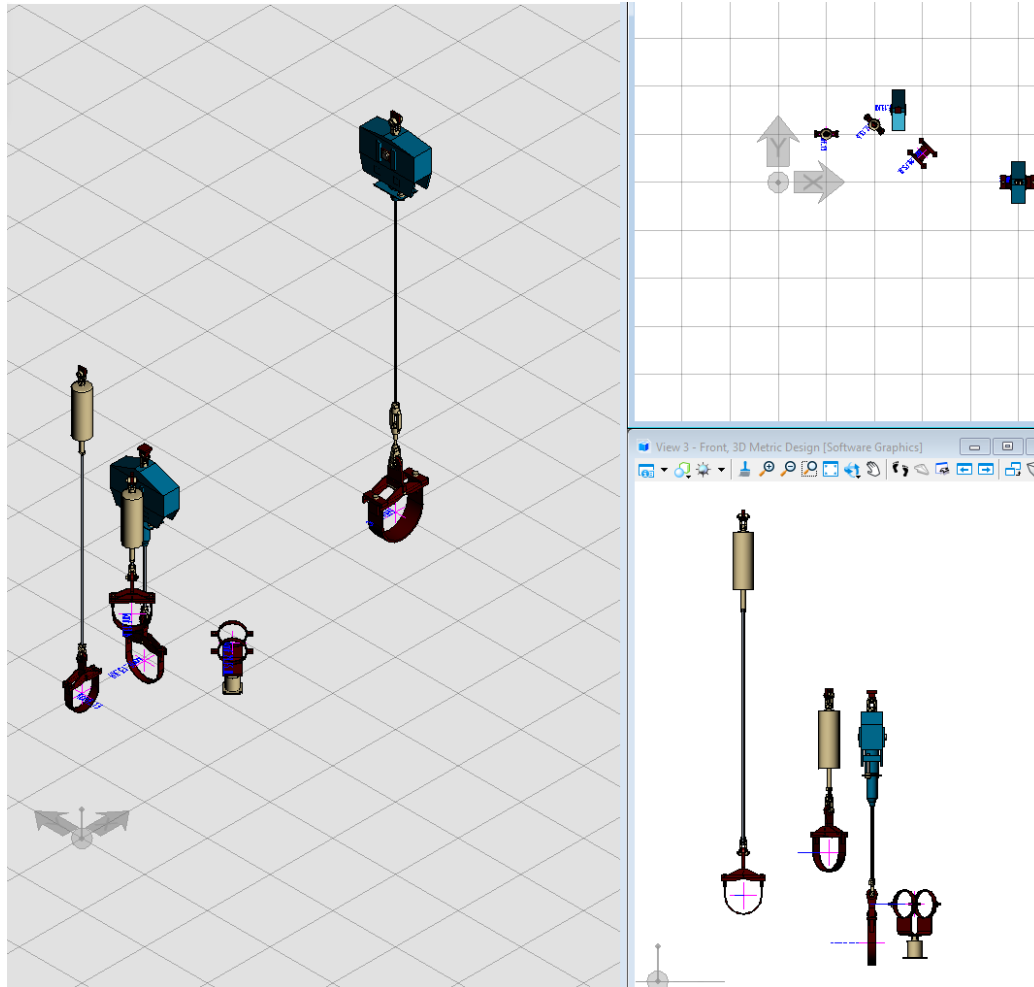


The part details are shown in the section "Part".

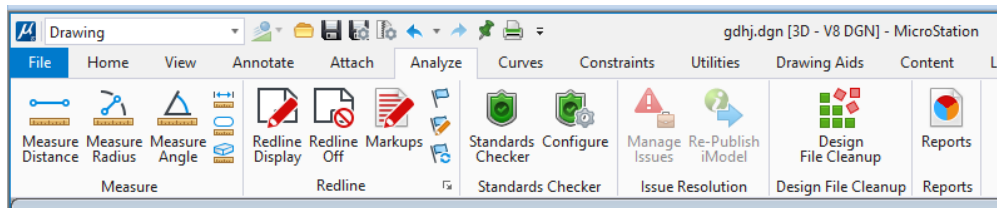
Create report with LISEGA support information

The support and part data can be used to create a report with the default MicroStation functionality.

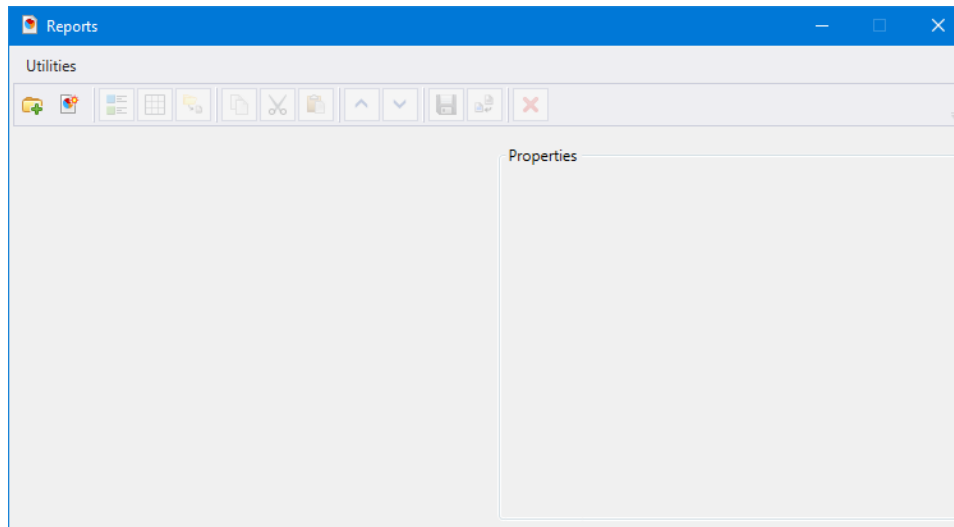
The model include a few supports .



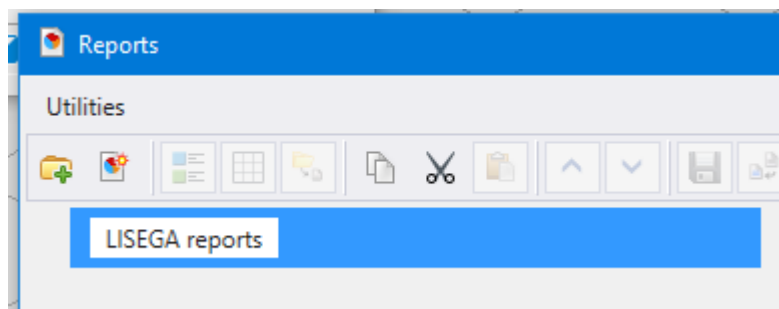
Goto “Analyse -> Reports”



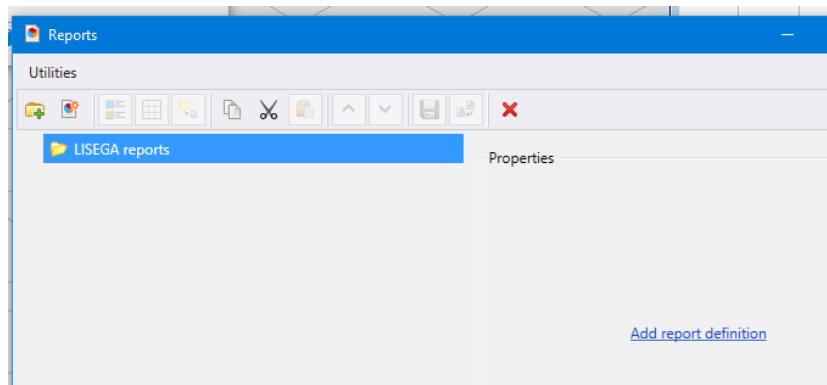
And define there a report.



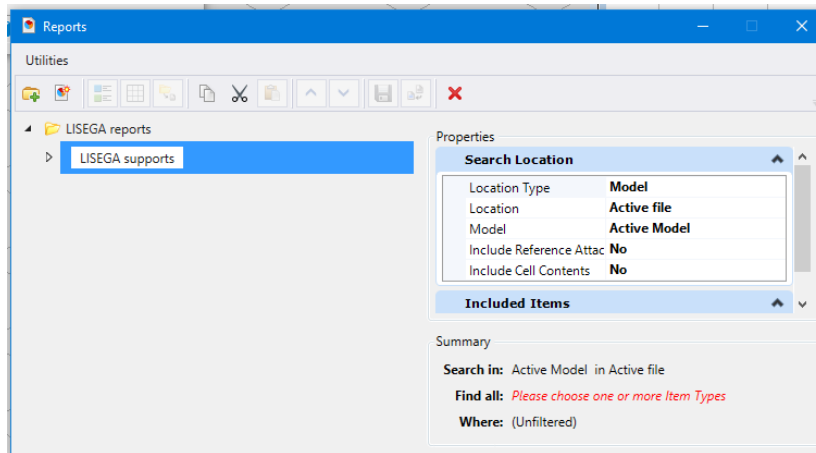
Create a new category:



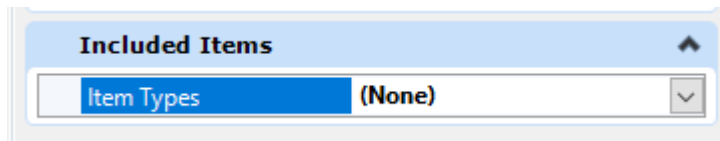
Select the category and create a new report:



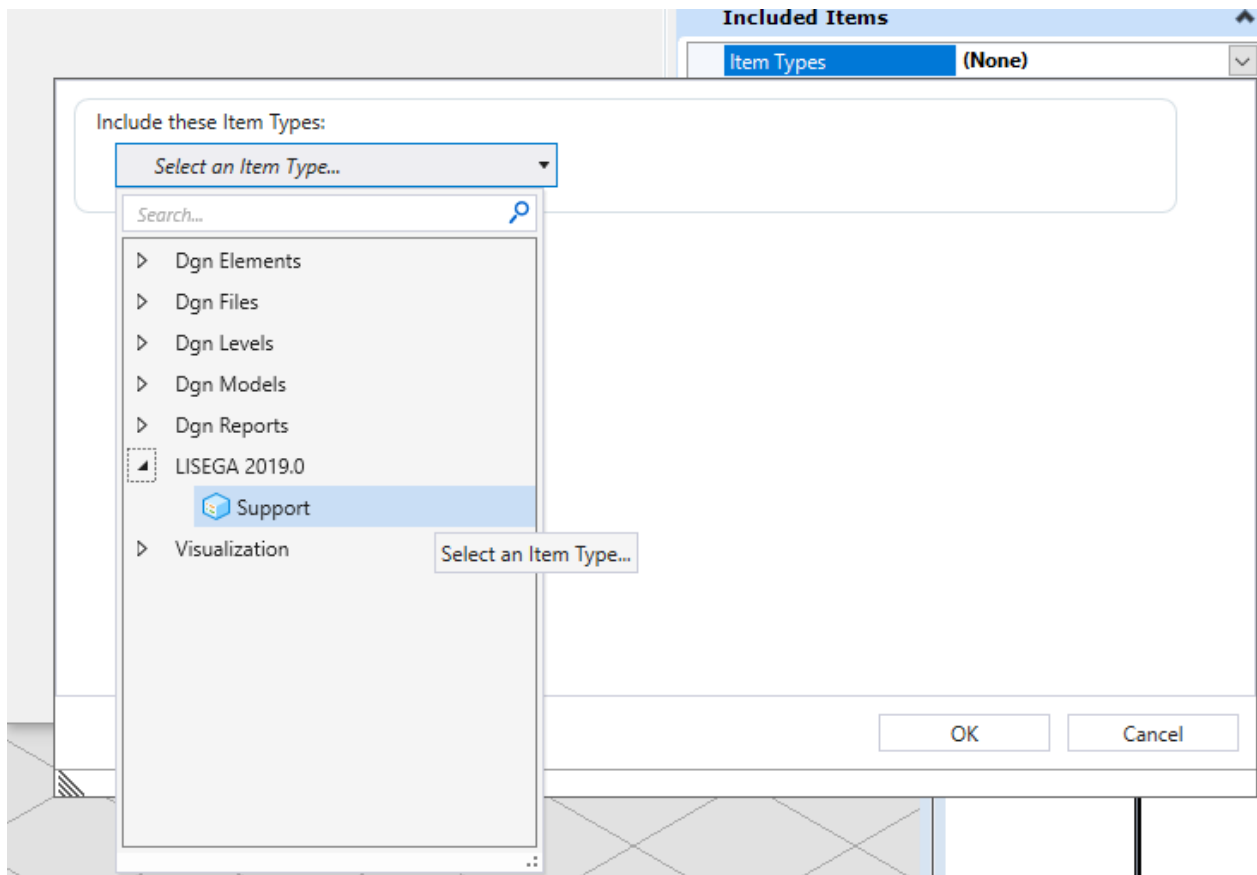
Enter the report name



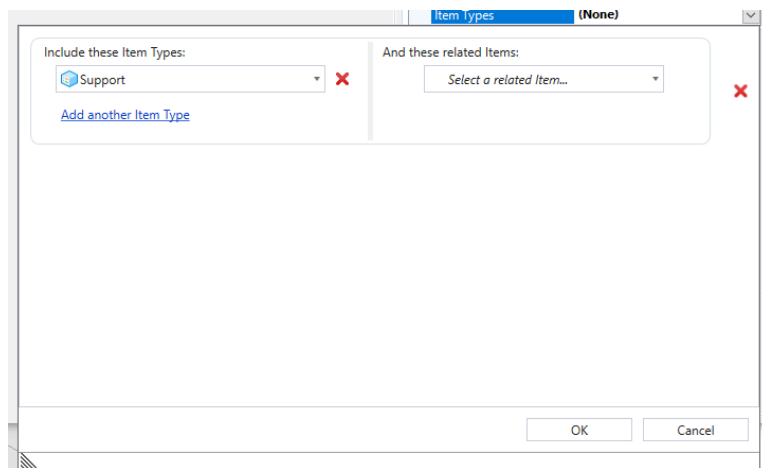
Open the list of possible “Item Types”



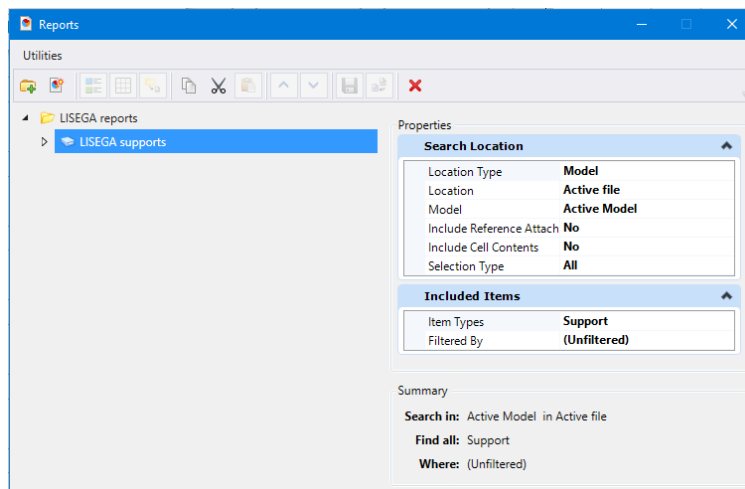
Select there the Item Type Library “LISEGA” and then the item type “Support”



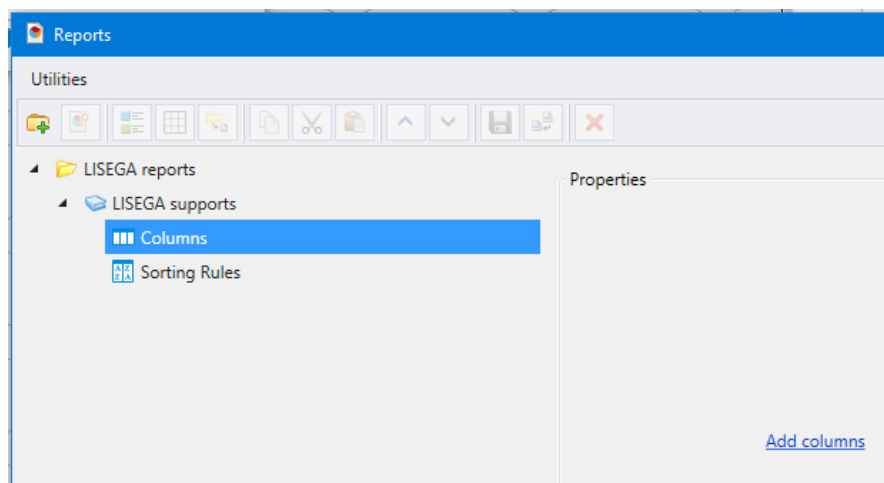
The result is:



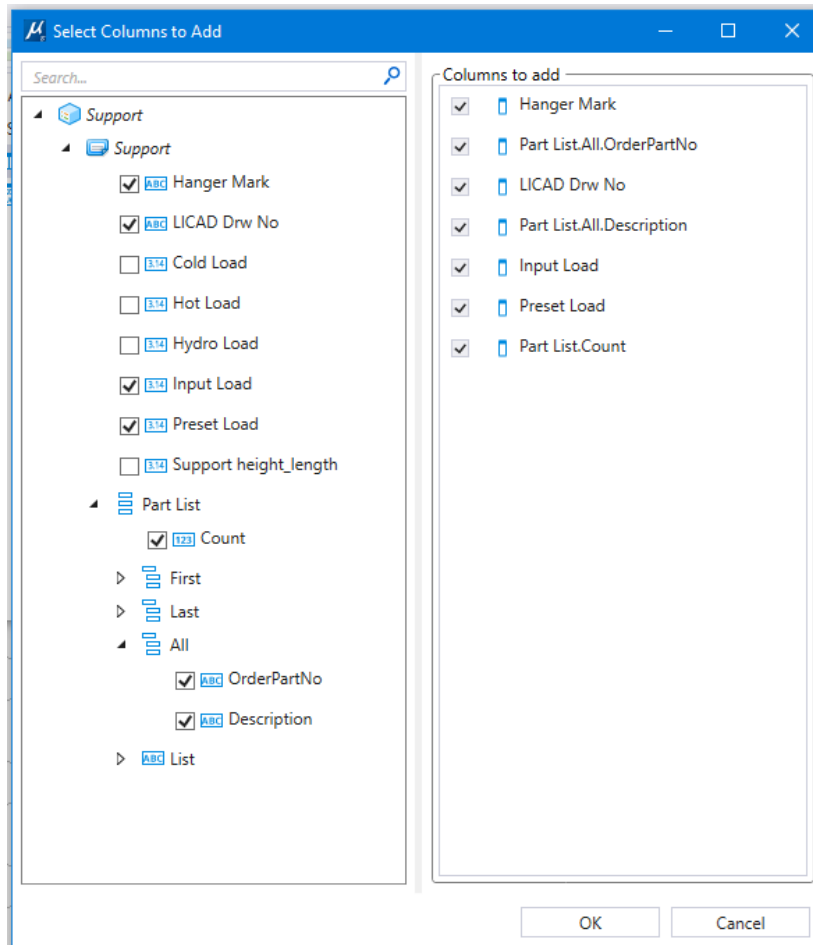
Press button “Ok”



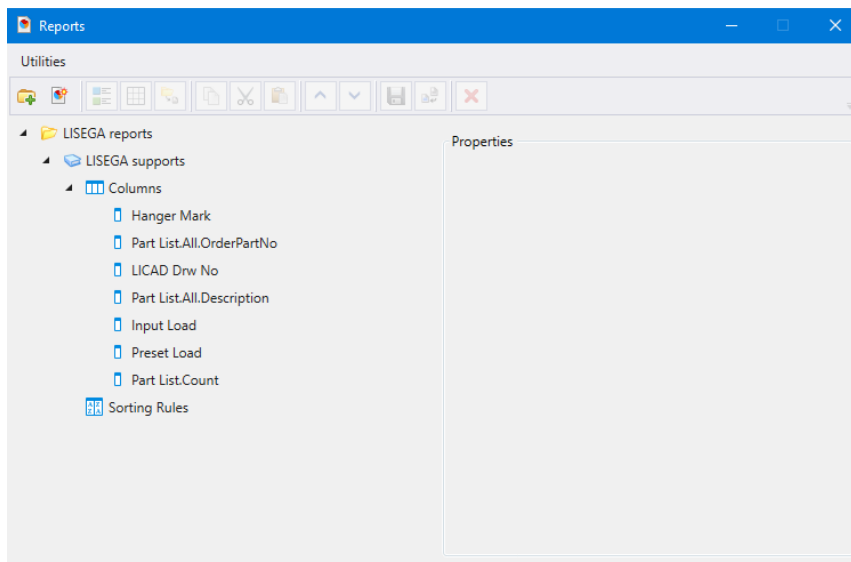
Open the treeview of the created report and select item “Columns”



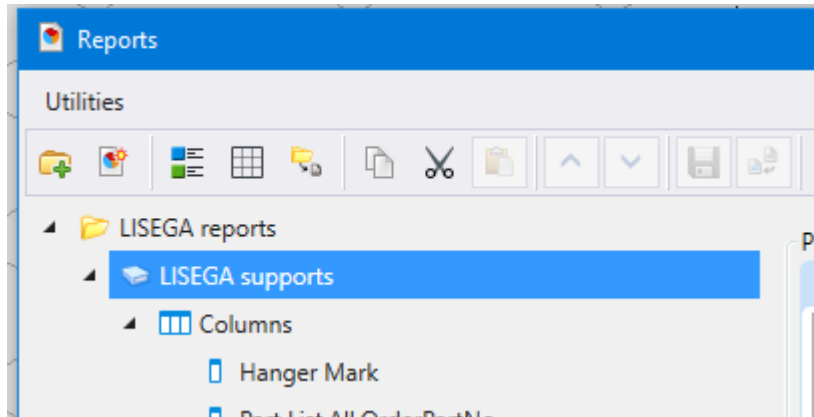
Now check the columns that should be used in the report:



Press button “Ok” to finish the report definition:



Select the report again. That enables the other buttons in the toolbar now.



Press the button "Preview results" (It the third button from the left) and the report is created and shown:

LISEGA supports

Total Results: 71

Drag a column header and drop it here to group by that column

Hanger Mark	Part List.All.OrderPartNo	LICAD Drw No	Part List.All.Description	Input Load	Preset Load	Part List.Count
6HRH080C	759112-HD	251-3-41156	Weld-on eye plate	66.9800	69.6700	12
	619922-HD		Clevis with pin			
	679123-HD		Threaded stud			
	119225-S5H		Constant hanger			
	673623-HD		Threaded rod			
	629922-HD		Turnbuckle			
	659123-HD		Tie rod l/r			
	619922-HD		Clevis with pin			
	446147		Pipe clamp			
	639918-HD		Hexagonal nut			
	639918-HD		Hexagonal nut			
	639918-HD		Hexagonal nut			
11LBG908Q101	75D119-HD	10201-3-37827	Weld-on eye plate	0.8800	0.0000	10
	61D919-HD		Clevis with pin			
	67D219-HD		Threaded rod			
	62D919-HD		Turnbuckle			
	65D119-HD		Tie rod l/r			
	60D919-HD		Eye nut			
	430918-HD		Three bolt clamp			
	63D929-HD		Hexagonal nut			
	63D929-HD		Hexagonal nut			
	63D929-HD		Hexagonal nut			
11LBG908Q122_test	75D119-HD	10393-3-37827	Weld-on eye plate	2.3700	0.0000	19
	75D119-HD		Weld-on eye plate			
	61D919-HD		Clevis with pin			
	61D919-HD		Clevis with pin			
	67D319-HD		Threaded rod			
	67D319-HD		Threaded rod			
	62D919-HD		Turnbuckle			
	62D919-HD		Turnbuckle			
	65D119-HD		Tie rod l/r			
	65D119-HD		Tie rod l/r			
	60D919-HD		Eye nut			
	60D919-HD		Eye nut			
	450919-0600-HD		Vertical pipe clamp			
	63D929-HD		Hexagonal nut			
	63D929-HD		Hexagonal nut			
	63D929-HD		Hexagonal nut			
	63D929-HD		Hexagonal nut			
	63D929-HD		Hexagonal nut			

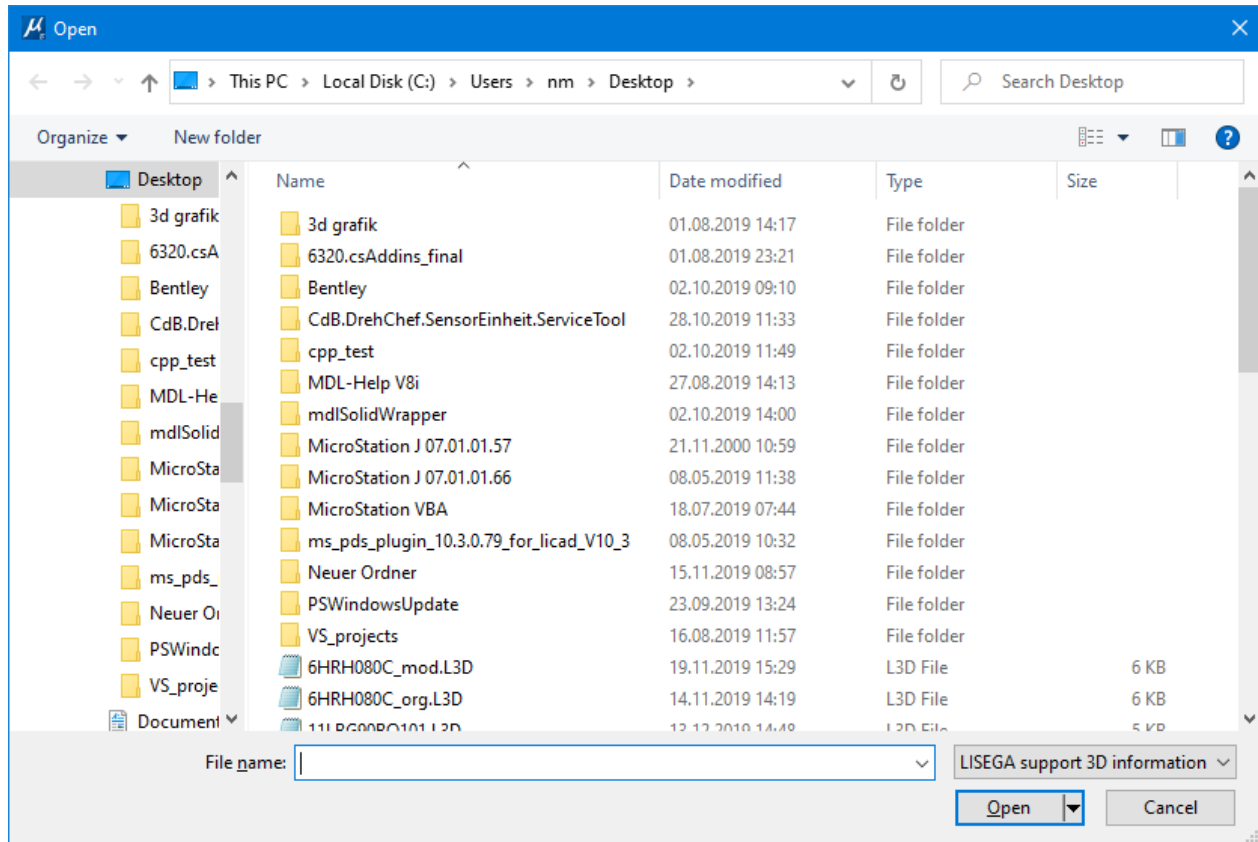
More information regarding reports can be found in the MicroStation documentation.

Addin functions

Import of L3D files

This will open a “File open” dialog, where files with the extension “.L3D” can be selected.

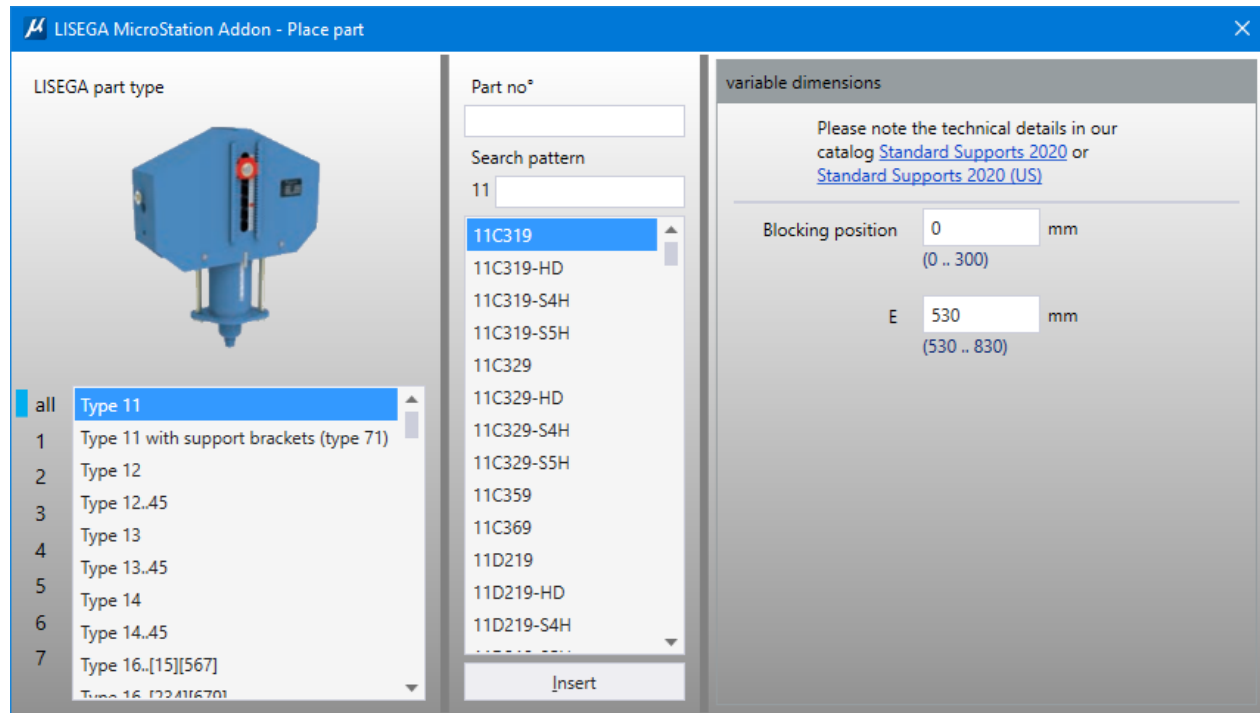
L3D files include the LICAD support information. The addin will create a complete 3D model from the defined support.



HINT: It is possible to select more than one file for one import run. The default Windows selection functionality can be used.

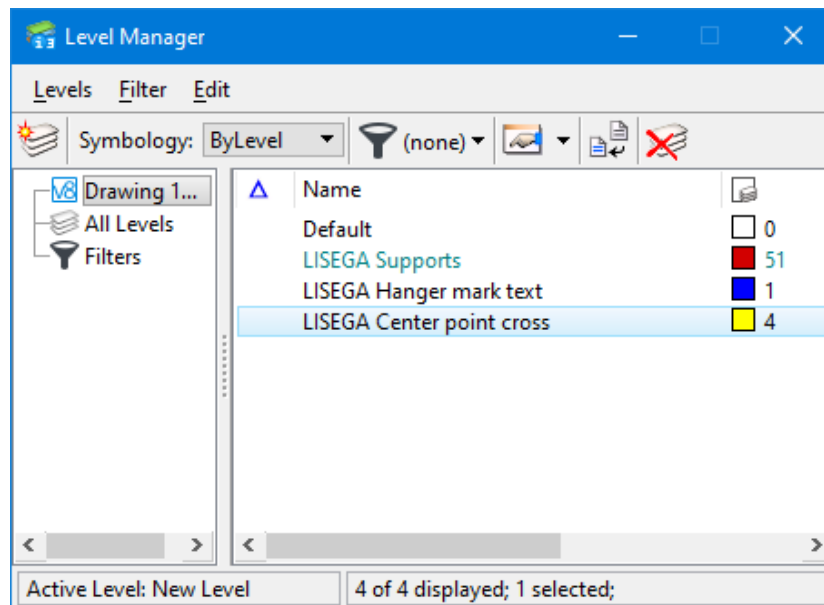
Place a single part from catalog

This command can be used to place a single LISEGA part from the catalog. The selection dialog is shown.

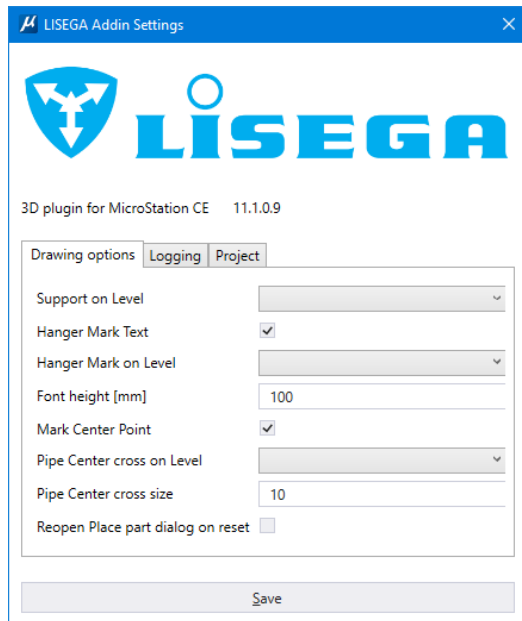


Addin settings

The created support model and other drawing information can be placed on levels that are available in the current DGN file.



The settings dialog can be used to select the levels and to set some other options.



The addin will generate a text element with the hanger mark number at the pipe center position, if the option is enabled.

It can also create a cross (created as three lines) at the pipe center position, if the option is set.

There is an option that allow the addin to open the place part dialog again, after the command is reset.

[Interactive support placement \(Run LICAD\)](#)

The pipe center and building connection points are inserted in the model and this information is directly transferred to our program LICAD. The LICAD window will automatically be opened after the points are entered in the MicroStation model.

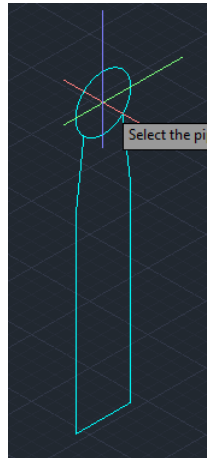
[Configurations available](#)

Five configurations are available for placing interactively a LISEGA support with the use of our program LICAD.

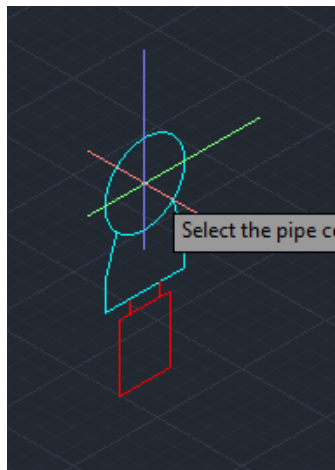
Configuration 1:
(Simple suspension for horizontal pipes)



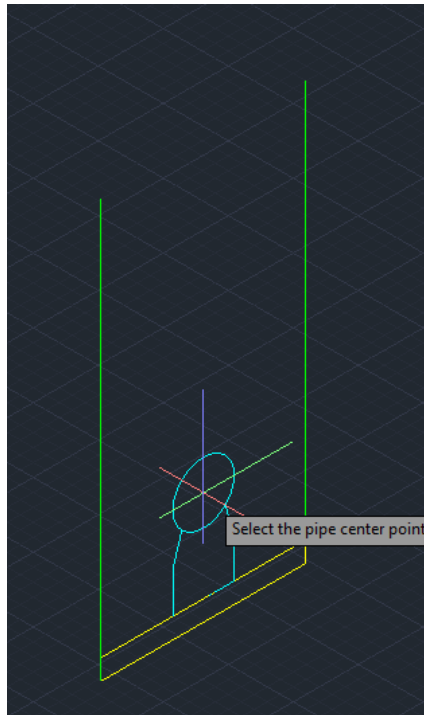
Configuration 2:
(Clamp base / pipe shoe for horizontal pipes)



Configuration 3: (Clamp base with spring support for horizontal pipes)



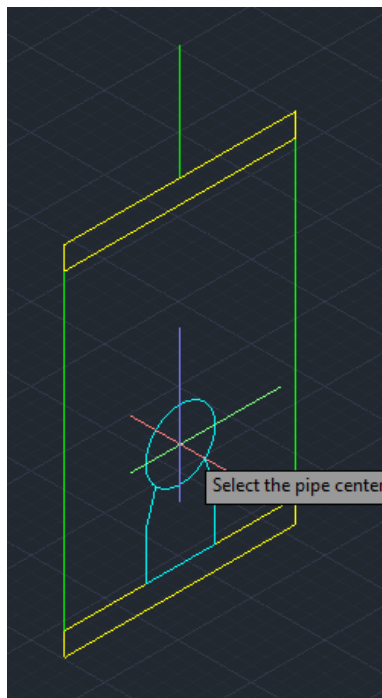
Configuration 4 (for horizontal pipes):



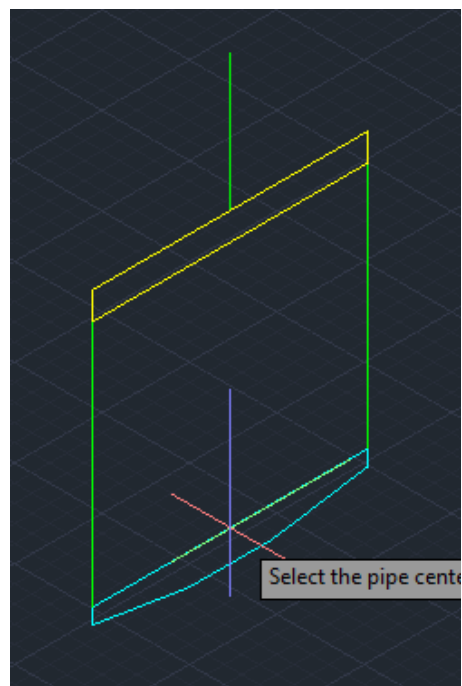
Configuration 4 (for vertical pipes):



Configuration 5 (for horizontal pipes):



Configuration 5 (for vertical pipes):



The LICAD window will look like the following screen shot.

Licadv11 (11.1.0.125) - [Project: LICAD V11 - OLE-Server]

4 -3- 20000 22.06.2022

Design load Section
☒ Static ☐ Dynamics ☐ Cold

Hanger mark no.
 Test: 91007

Drawing no.

Calculation point

13

10967
 2751

Pre-select Constant hanger
 Pre-select Spring hanger

Pipe direction
☐ Horizontal ☐ Vertical ☒ Both

Differences
 Notations

LabelSurfaceProtectionSet
 LStrCatalogInUse
 LStrNuclear

Selection of clamps for max. off-set (4" or 6")
 Selection of 3/8" or M10 not allowed

Hanger selection ->
 Automatic

Project folder: C:\Users\Public\Documents\LISEGA\LICAD V11\Projects\LICADV111PRJDB.FDB (Port for private FB: 27404)
 Project name: <Current project name>

Top connection
 Type 75 Weld-on eye plate

Bottom connection
 Standard pipe clamps

Product supplements for pipe clamps and clamp bases
 Standard

On completion of all inputs, only the button at the bottom right with the green arrow now has to be pressed. LICAD then assembles the components required and supplies the information to the plug-in.

The plug-in reads this information and generates from it the whole support out of the individual components composed from 3D bodies.

The result of this example looks as follows:

