

Introduction

This version of the LICAD Plugin is designed to work with the Hanger and Support catalog LISEGA 2020. The LISEGA 2020 catalog is available at the Intergraph Smart Support website. Please download it and follow the installation instructions before proceeding.

Note: The LISEGA 2020 parts are not an update to the 2010 parts. Rather, they are a new set of parts entirely. The 2010 parts will not work with this version of LICAD plugin. It is recommended to NOT mix the 2010 and 2020 parts in the same S3D Project.

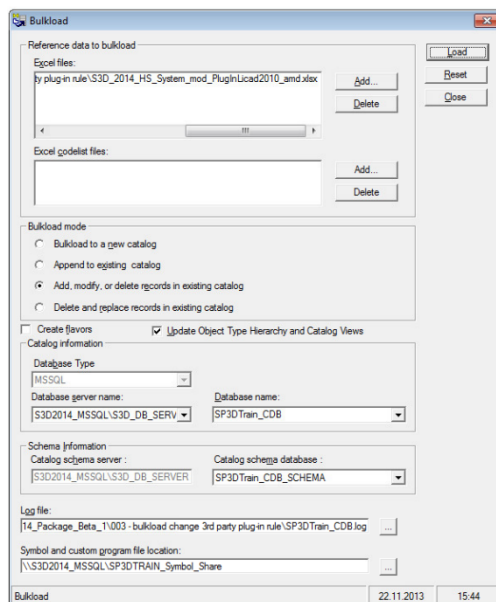
Installing the plug in DLL

Copy the content of the folder ".\Custom Symbols" into your "<Symbol Share>\Custom Symbols" folder

Then run "Update Custom Symbol Configuration" from S3D Project Management for the catalog.

HINT: Please keep in mind that LICAD V 10 or V 11 must be installed as well to use the plug-in, because the plug-in is only the link between Smart3D and LICAD!

Enable LISEGA plug-in




Run the bulkload utility to change the rule which plug-in should be started when clicking on the button "Start 3rd Part app". By default Intergraph Example plug-in will be started.

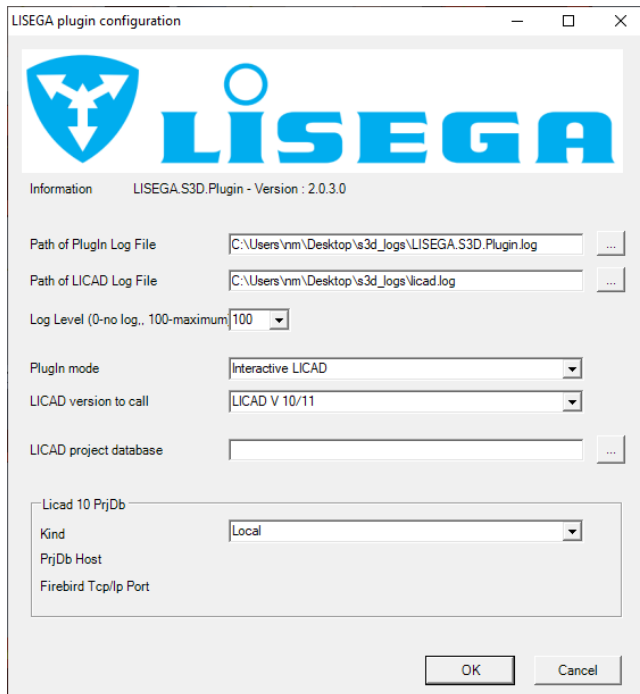
Use the bulkload file "HS_System_mod_PluginLicad2020_amd.xlsx" to change the rule.

Usage

Plugin configuration settings

Use the button “Start 3rd Party App”  in Hanger and Support task while pressing the <Shift> or <Ctrl> key to open the plugin settings dialog.

The following dialog will be displayed:



The plugin mode is responsible for the behavior of the plugin when running the command.

“Interactive LICAD” mode

The “Interactive LICAD” mode will open LICAD directly to design the support in place.
(see LICAD manual for details regarding LICAD itself)

The screenshot displays the Licadv10 software interface. The title bar reads "Licadv10 (10.4.0.105) - [Project: LICAD V10 - OLE-Server]". The top bar shows "15", "- 3 -", "20000", and "13/08/2021".

Design load Section:

- ☒ Static
- ☐ Dynamics
- ☐ Cold

Hanger mark no.: DesignPipeH 5-1-2701

Drawing no.: [Empty field]

Calculation point: [Empty field]

Navigation buttons: [Back], [Previous], [Next], [Forward], [13], [More]

3D Model: A schematic diagram of a pipe hanger system. A vertical pipe is connected to a horizontal pipe. The vertical pipe has a hanger. Dimensions 3650 and 1333 are indicated. A coordinate system (X, Y, Z) is shown.

Parameters:

- Load [Cold]: 43 [KN]
- Hydro test load: 0 [KN]
- Pipe diameter: 273 [mm]
- Insulation: 0 [mm]
- Temperature: 230 [°C]
- Lateral: 0 [mm] (Y)
- Horizontal: 0 [mm] (X)
- Vertical: 35 [mm] (Z)

Buttons: Pre-select Constant hanger, Pre-select Spring hanger

Units: Metric (kN)

Top connection: Type 75 Weld-on eye plate

Bottom connection: Standard pipe clamps

Product supplements for pipe clamps and clamp bases: Standard

Pipe direction: ☐ Horizontal, ☐ Vertical, ☒ Both

Buttons: Differences, Notations

Labels: LabelSurfaceProtectionSet, LStrCatalogInUse, LStrNuclear

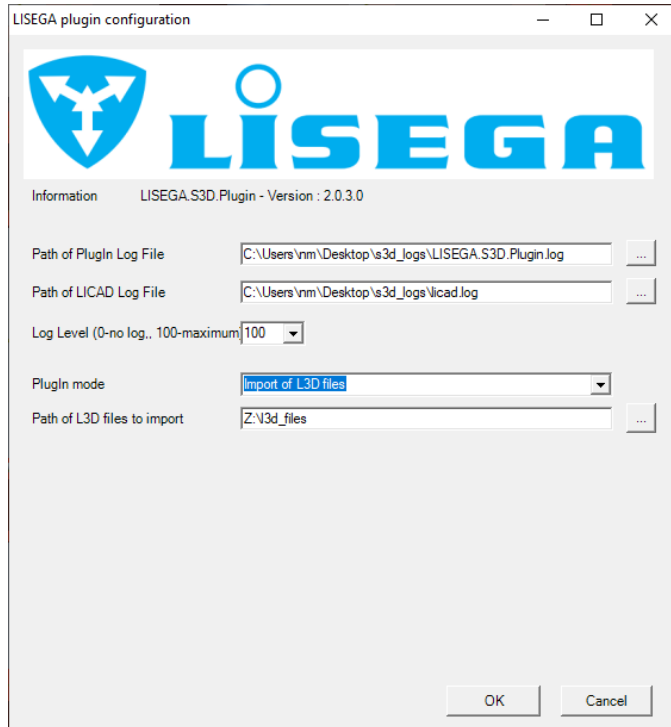
Hanger selection: AUTO

Project folder: C:\Users\Public\Documents\LISEGA\LICAD V10\Projects\Default\LICADV104PRJDB.FDB (Port for private FB: 27404)

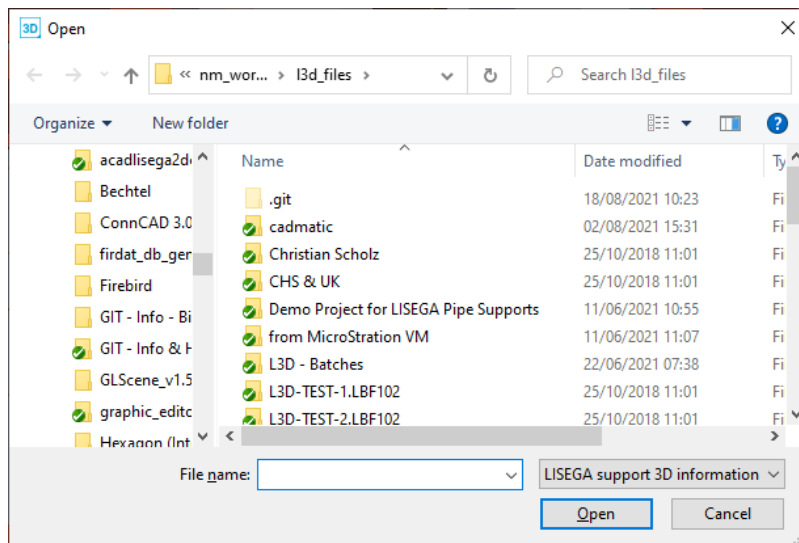
Project name: <Current project name>

“Import of L3D files” mode

The “Import of L3D files” mode



will only open a file selection dialog



to select a “.L3D” file that was previously created with LICAD. The file content is read by the plugin and it will creates the support in the S3D model.

Generated support

The result is the same independent which mode is used: A support build with LISEGA components is created.

