

LISEGA addin
for
MicroStation V8i

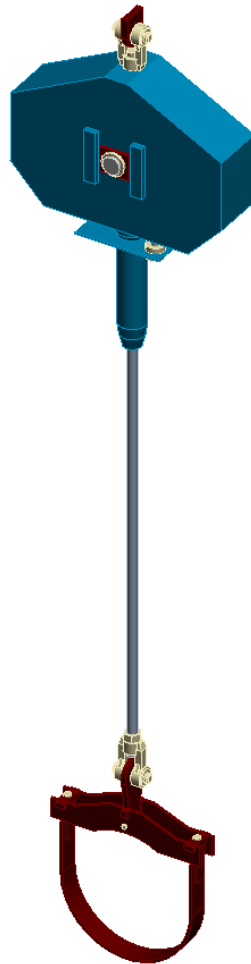
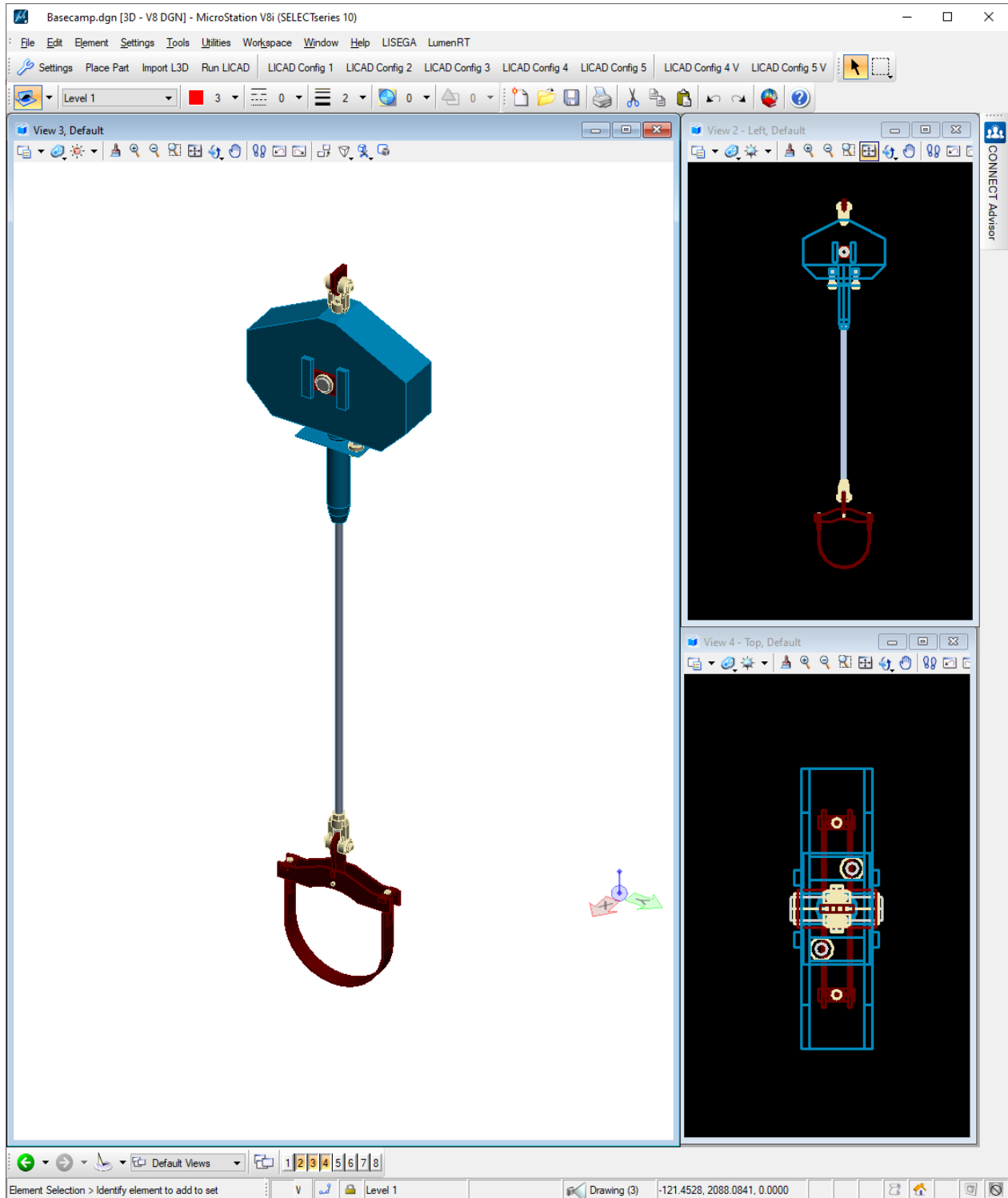


Table of content

Introduction.....	3
Installation.....	4
Add-In Configuration	6
Uninstallation	7
GUI modification	8
Key-ins	8
Addin functions	9
Import of L3D files	9
Place a single part from catalog	10
Addin settings.....	10
Interactive support placement (Run LICAD).....	11
Configurations available	11

Introduction

The new add-in include a complete new graphic catalog. Here is an example:

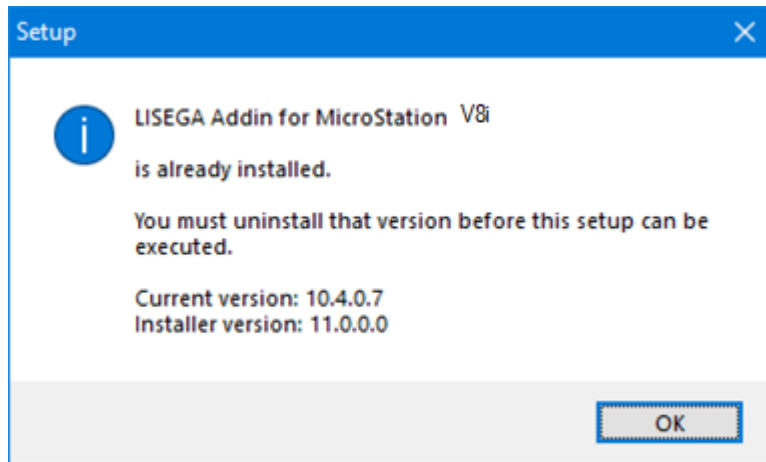


Installation

Close MicroStation V8i before you start the installation.

IMPORTANT: Remove any existing beta versions manually before starting the installation!

Any normal previous installation is recognized and the setup stops:



So, please use the Windows uninstall functionality to remove that version first!

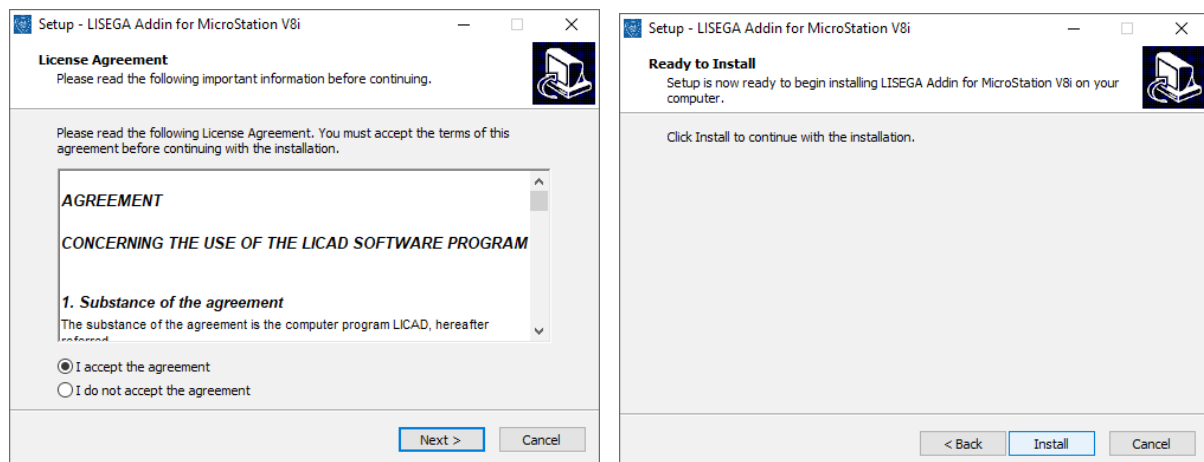
Execute the installation program “LisegaAddin_11.0.0.0_for_MicroStation_V8i.exe”

The installer will copy the required files to the following folders:

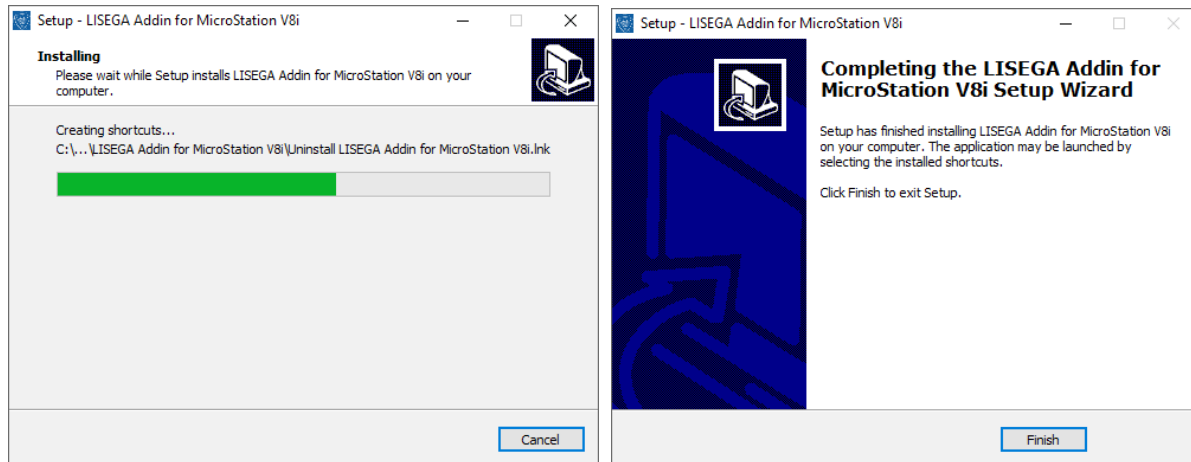
- \$(MSDIR)\Mdlapps\LisegaAddin*.*
- \$(MSDIR)\config\appl\LisegaAddin.cfg

The installation is developed for easy installation without the need to specify the destination folders. The required information is taken from the MicroStation V8i installation.

It's only required to accept the license agreement.



The installation will start after pressing the “Install” button.

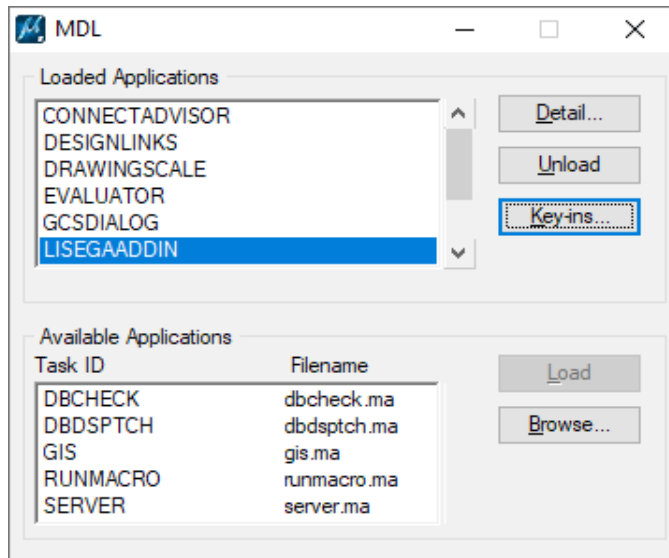


Add-In Configuration

There is nothing to configure!

The LISEGA add-in will automatically be loaded when MicroStation V8i starts.

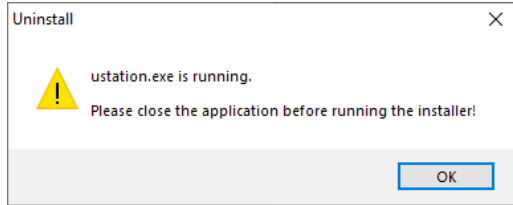
The task ID is "LISEGAADDIN".



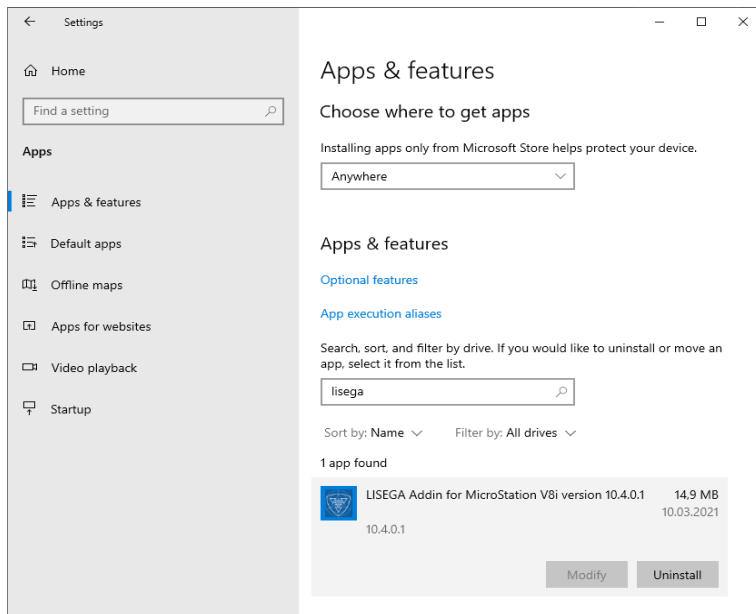
Uninstallation

Close MicroStation V8i before starting the uninstallation.

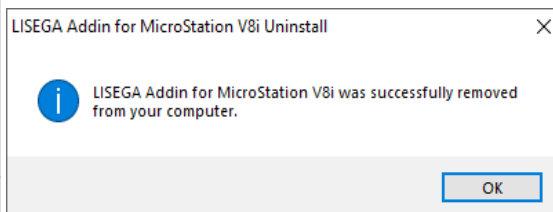
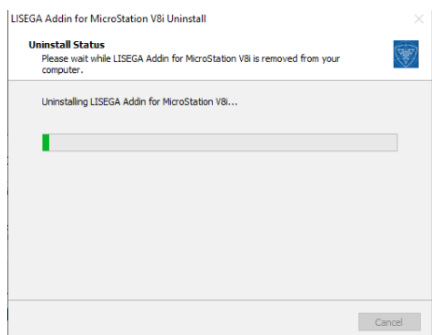
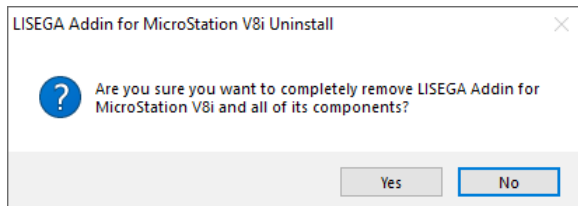
The setup program will check that and abort if MicroStation is running:



To start the uninstall process goto "Windows Settings -> Apps & features"



Click "Uninstall" to start the process



GUI modification

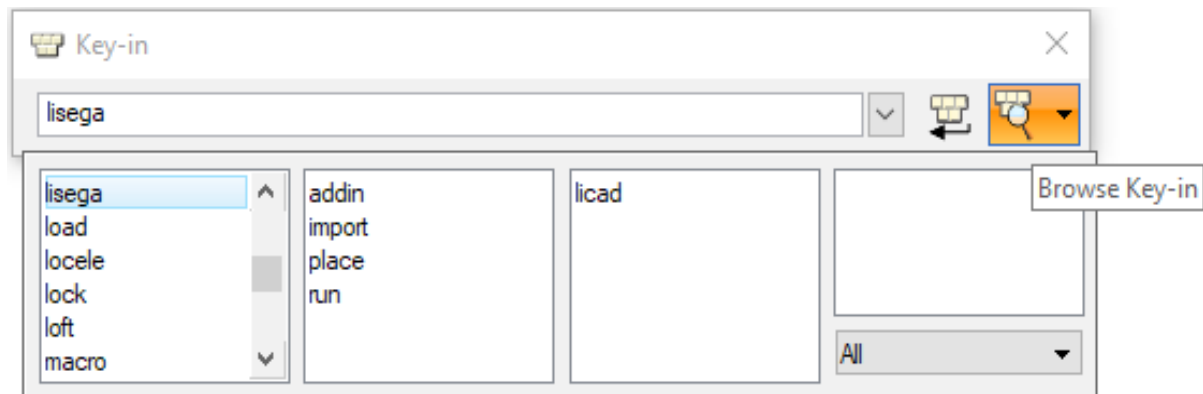
The add-in will add a menu and a toolbar called “LISEGA”, which contains the available commands.



Key-ins

There are four commands available:

- lisega addin settings
- lisega import l3d
- lisega place part
- lisega run licad



The “lisega run licad” command supports two parameters. The first parameter can be a number in the range 1 to 5. The second parameter can be “H” for horizontal pipe orientation or “V” for vertical pipe orientation. If the second parameter is missing, “H” is assumed.

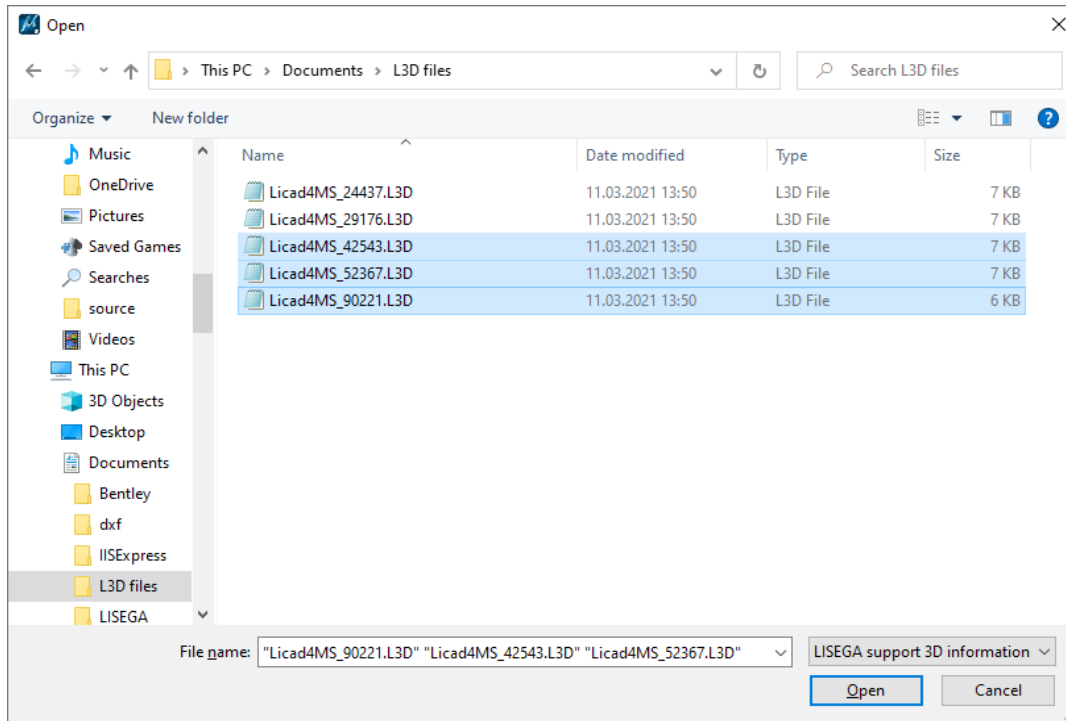
That are the 5 configurations that are possible (Details see ...).

Addin functions

Import of L3D files

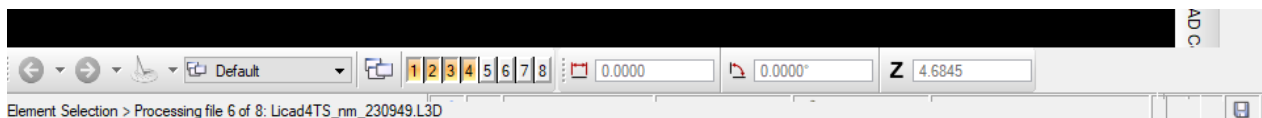
This will open a “File open” dialog, where files with the extension “.L3D” can be selected.

L3D files include the LICAD support information. The addin will create a complete 3D model from the defined support.

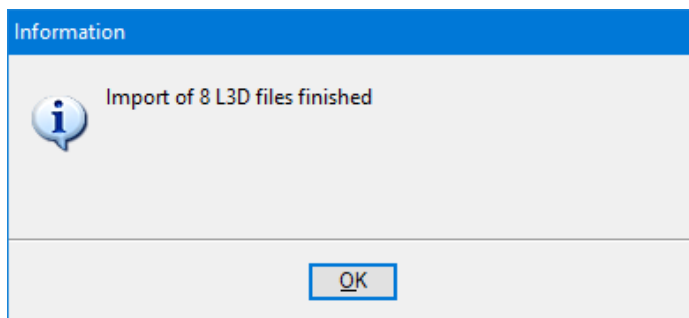


HINT: It is possible to select more than one file for one import run. The default Windows selection functionality can be used.

The status bar is updated to show the current progress:

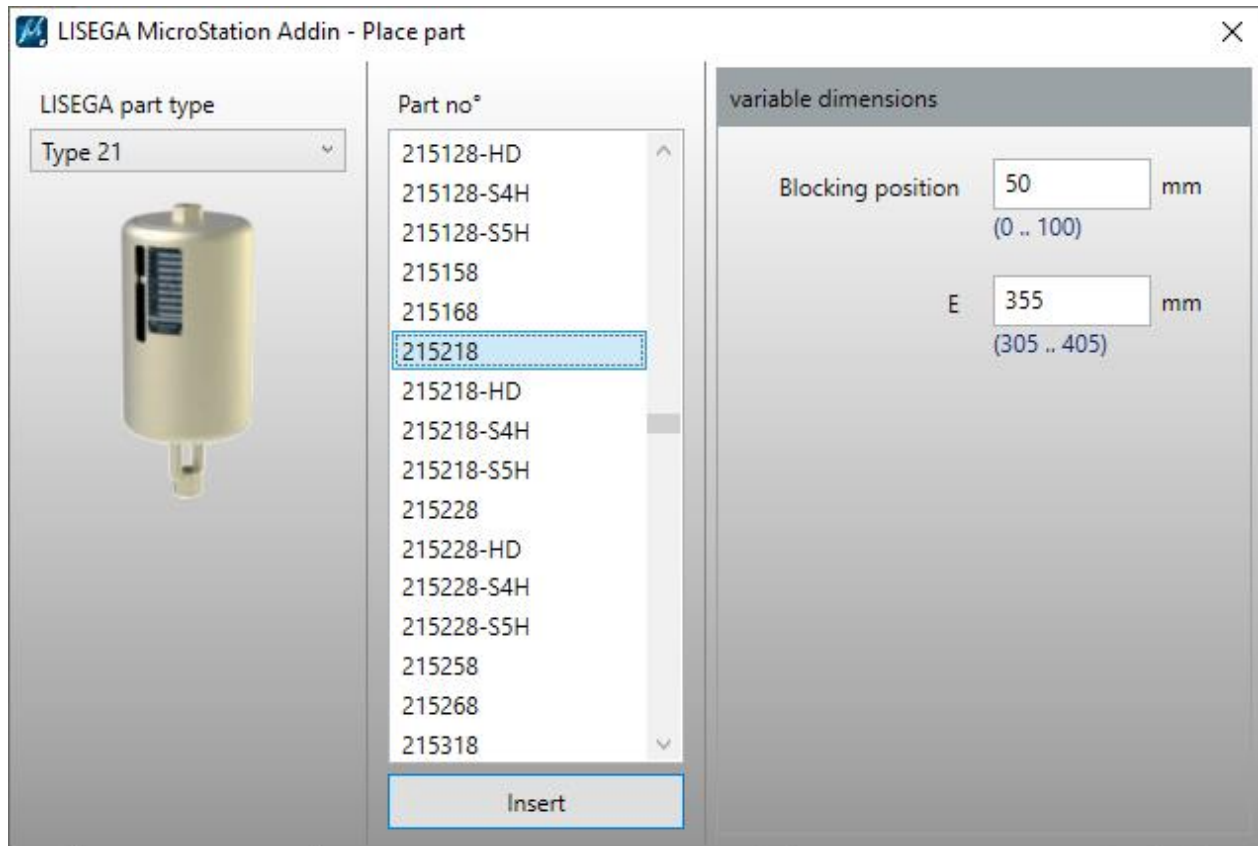


An information dialog is shown when the import is finished:



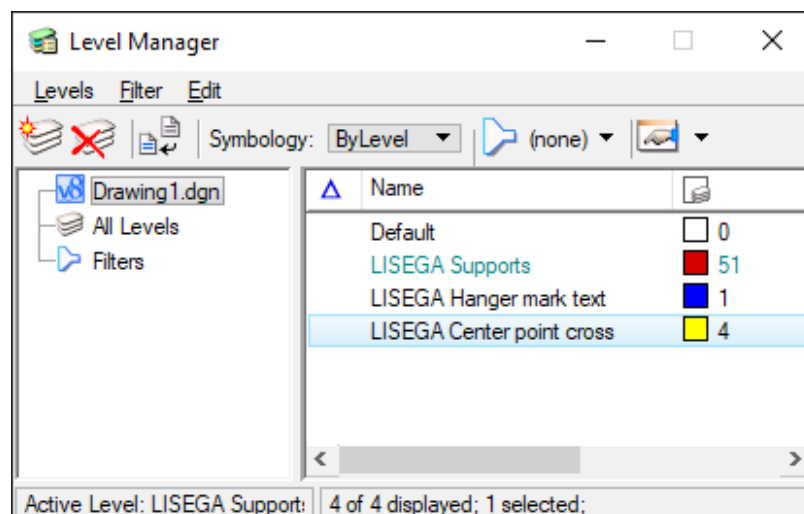
Place a single part from catalog

This command can be used to place a single LISEGA part from the catalog. The selection dialog is shown.

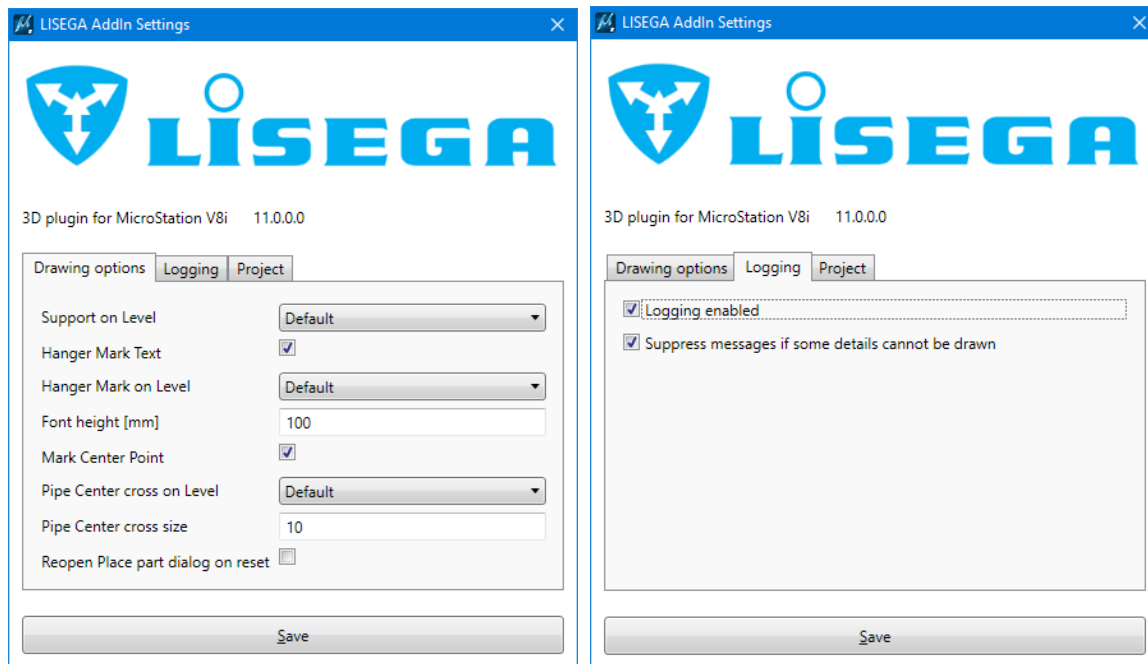


Addin settings

The created support model and other drawing information can be placed on levels that are available in the current DGN file.



The settings dialog can be used to select the levels and to set some other options.



The addin will generate a text element with the hanger mark number at the pipe center position, if the option is enabled.

It can also create a cross (created as three lines) at the pipe center position, if the option is set.

There is an option that allow the addin to open the place part dialog again, after the command is reset.

[Interactive support placement \(Run LICAD\)](#)

The pipe center and building connection points are inserted in the model and this information is directly transferred to our program LICAD. The LICAD window will automatically be opened after the points are entered in the MicroStation model.

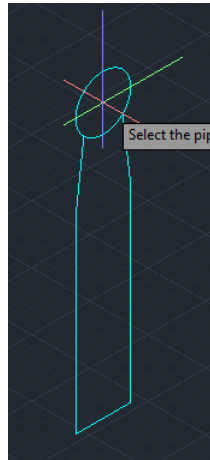
[Configurations available](#)

Five configurations are available for placing interactively a LISEGA support with the use of our program LICAD.

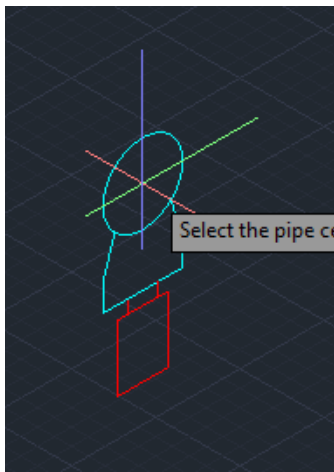
Configuration 1:
(Simple suspension for horizontal pipes)



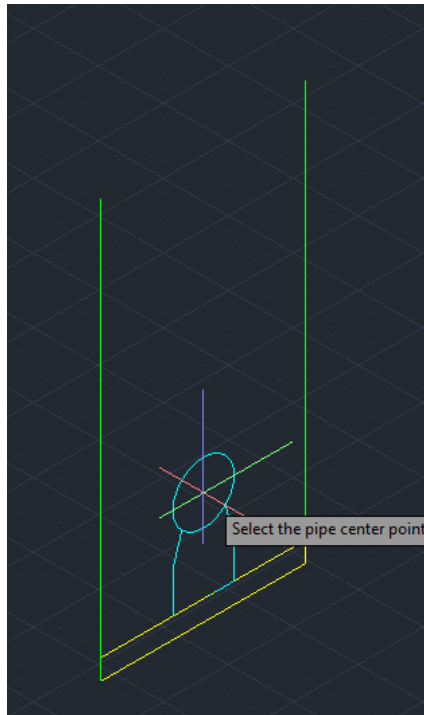
Configuration 2:
(Clamp base / pipe shoe for horizontal pipes)



Configuration 3: (Clamp base with spring support for horizontal pipes)



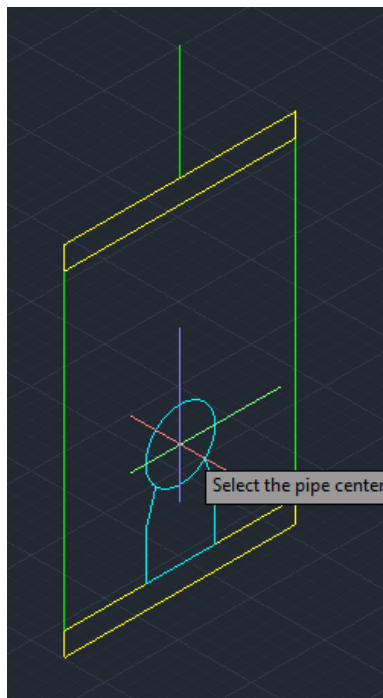
Configuration 4 (for horizontal pipes):



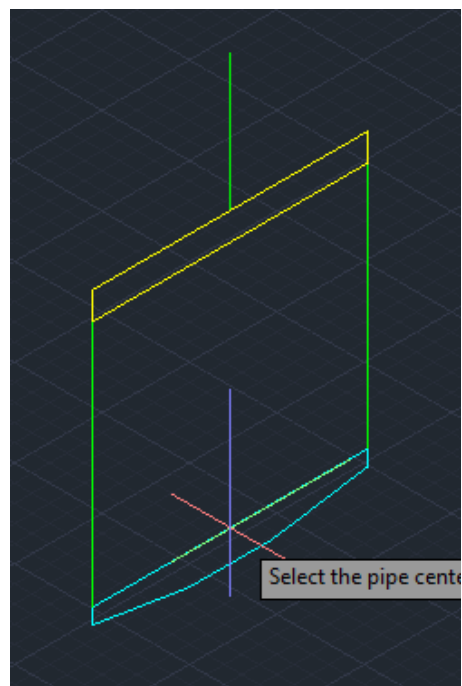
Configuration 4 (for vertical pipes):



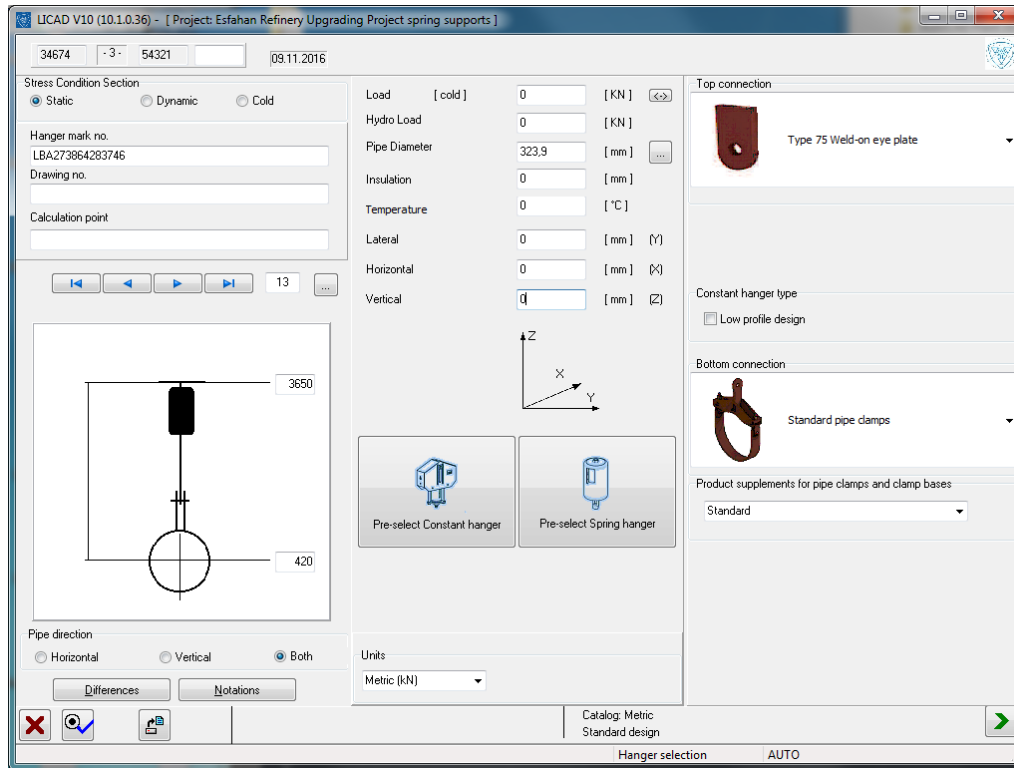
Configuration 5 (for horizontal pipes):



Configuration 5 (for vertical pipes):



The LICAD window will look like the following screen shot.



On completion of all inputs, only the button at the bottom right with the green arrow now has to be pressed. LICAD then assembles the components required and supplies the information to the plug-in.

The plug-in reads this information and generates from it the whole support out of the individual components composed from 3D bodies.

The result of this example looks as follows:

