

VIBRATION PROBLEMS?  
See the VICODA solutions.

VICODA GmbH

Gerhard-Liesegang-Straße 1  
27404 Zeven | Germany

Tel. +49 (0) 42 81 – 98 59-0  
Fax +49 (0) 42 81 – 98 59-100

[www.vicodagroup.com](http://www.vicodagroup.com)  
[info@vicoda-gmbh.com](mailto:info@vicoda-gmbh.com)

TO ANY  
**VIBRATION ISSUE**  
ALWAYS THE  
**BEST SOLUTION**

A LISEGA Group Company

[www.vicodagroup.com](http://www.vicodagroup.com)

Performance by Technology

VICODA is specialized in the design and fabrication of a comprehensive product program for the fields of vibration isolation and elastic bearings. All the most important applications are included herein. Using this variety of alternatives our engineers can always determine the most suitable product from a "solution-orientated" perspective.

You can always be sure of getting the best product for your specific application.



## INDUSTRIES

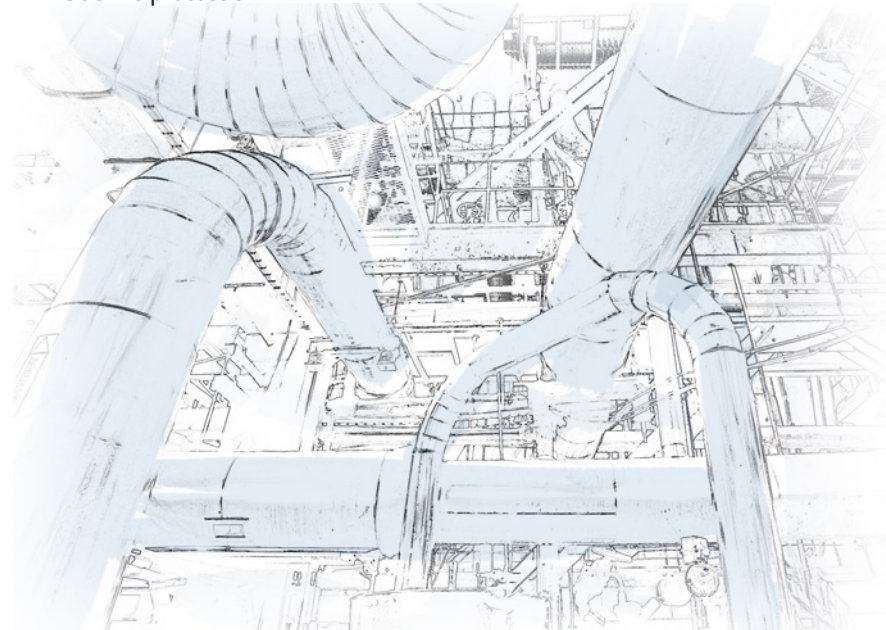
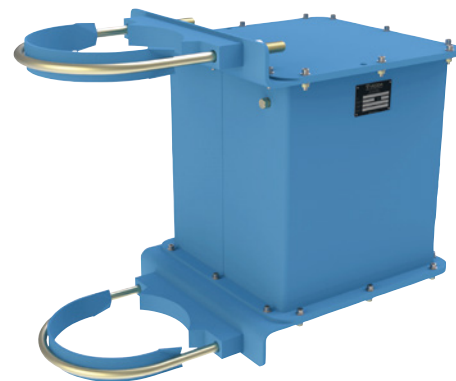
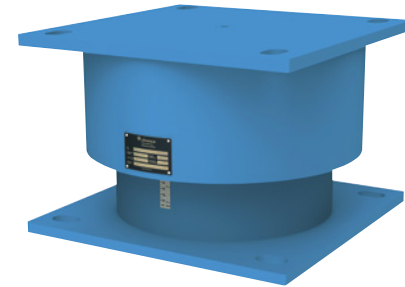
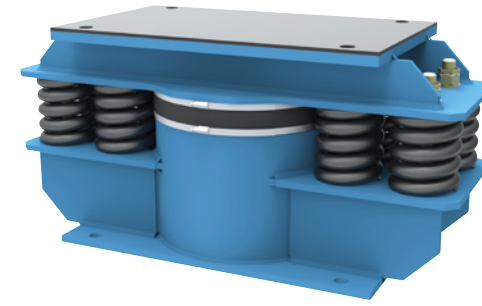
▶ **Spring Elements**  
Turbine table, steam water pump, diesel generator, coal crusher, tooling machines

▶ **Viscoelastic Dampers**  
Piping systems, coal crusher

▶ **Tuned Mass Dampers (TMD)**  
Piping systems, stacks

▶ **Active Damping Devices (ADD)**  
Piping systems

▶ **Snubbers**  
Seismic protection



## BUILDINGS

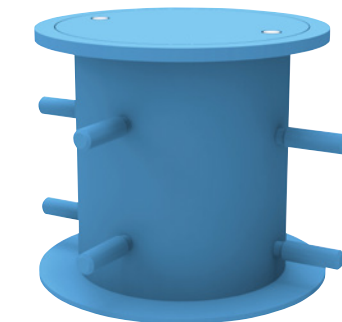
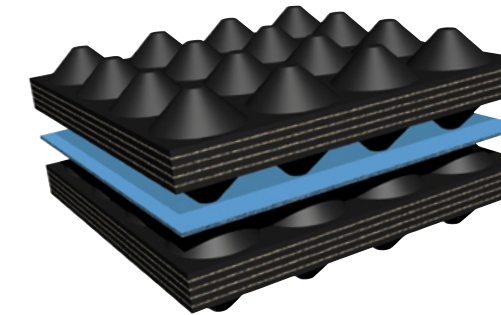
▶ **Static Structural Bearings**  
Residential and industrial buildings, stadiums

▶ **Dynamic Structural Bearings**  
Hotels, concert halls, residential buildings

▶ **Tuned Mass Dampers (TMD)**  
High rise buildings, trading floors

▶ **Floating Floor Elements**  
Recording studios, GYMs, clubs, sensitive equipment

▶ **Hydraulic Dampers**  
Seismic protection



## RAILWAYS

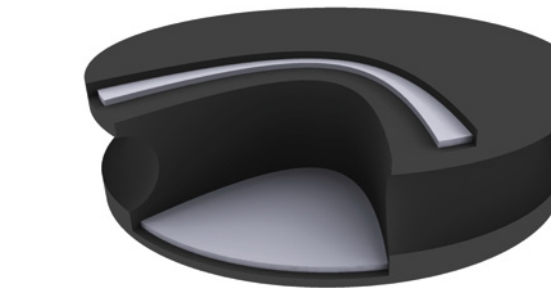
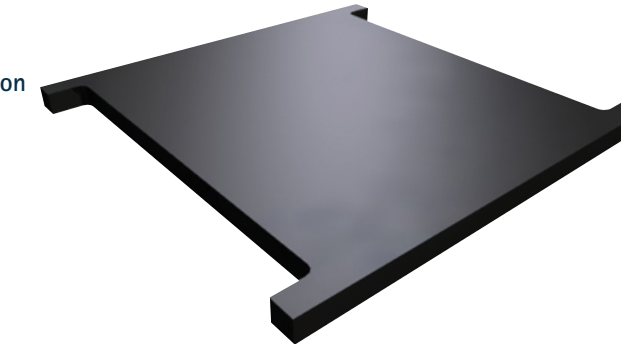
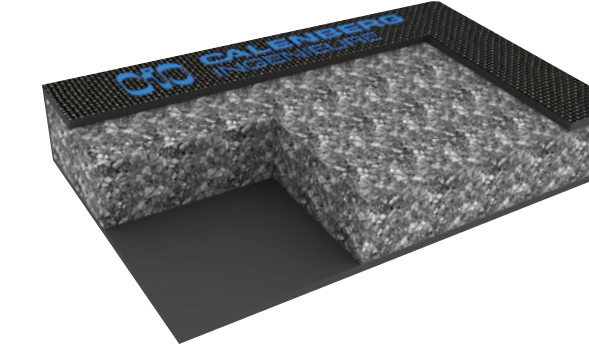
▶ **Railpads**  
Slab track, ballasted track

▶ **Track Mats**  
Ballasted track, floating slab track

▶ **Floating Slab Tracks Products**  
Tram, Metro, main and highspeed lines

▶ **Oil Absorption Mats**  
Groundwater or soil protection

▶ **Sound Barriers**  
Noise barrier units for high speed railway lines, transmitting little or no torsion



## BRIDGES

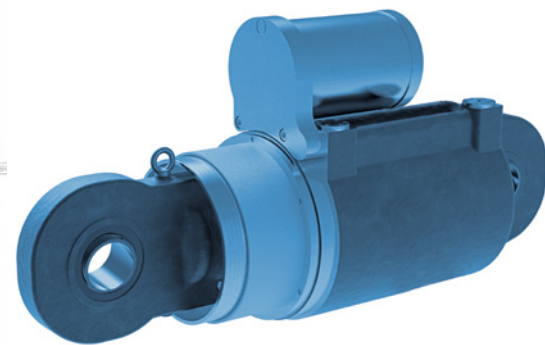
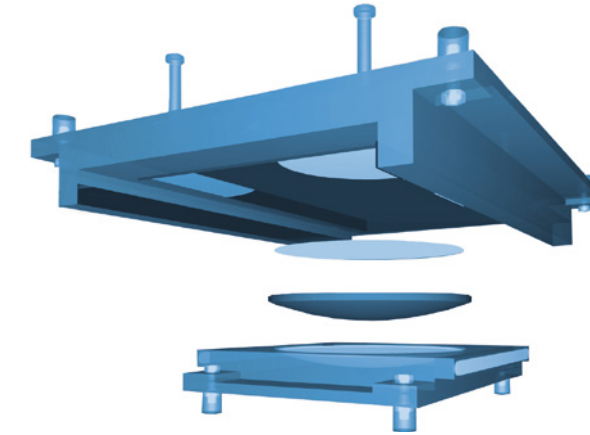
▶ **Elastomeric Bearings**  
Bridges

▶ **Pot/Spherical Bearings**  
Viaduct, suspension bridge

▶ **Expansion Joints**  
Viaduct, suspension bridge

▶ **Shock Transmission Units (STU)**  
Seismic protection

▶ **Tuned Mass Dampers (TMD)**  
Footbridge, slender bridge, pylon



For details see our webpage or request the product catalogs.