



VICODA

SECURELY AND QUITLY **mounted**

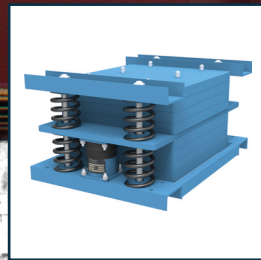
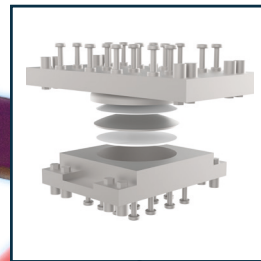
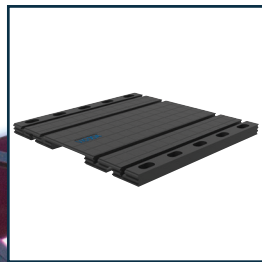
**Our** solution concepts



The strong corporate partnerships within the LISEGA Group have comprehensive competence in

**Bridge construction**





The wide-ranging product portfolio of the corporate group offers complete structural protection.

Climatic, tectonic or traffic-related forces and displacements affecting bridges can be controlled through the use of compression and tension rod systems, structural bearings, expansion joints, tuned mass dampers as well as anti-seismic devices and so prevent damage.



## OUR PRODUCTS

The **M-CONNECT COMPRESSION AND TENSION ROD SYSTEMS** are, besides having esthetic appeal, invaluable for reinforcing steelwork in bridge construction. Defined prestressing is one of many advantages.

**m-connect tension rod systems** in unalloyed structural steel and stainless steel transmit defined tensile forces. They are suitable for all types of suspension and anchoring.

**m-connect compression rod systems** in unalloyed structural steel and stainless steel are specially designed for absorbing and transmitting pressure forces. They are ideal for use as stabilizing elements and supports and for suspension in the case of simultaneous pressure loads.

## WE SUPPORT YOU

With our services we support you as partners in all project phases, from consultancy and project-related solutions to production with diverse quality assurance measures, as well as external product acceptance, right through to installation and structural acceptance support.

## The benefits at a glance

- European Technical Approval (ETA 06-236)
- Range of dimensions from M6 to M120
- Tension rod material S460 of increased strength
- Structural and stainless steel
- Hydraulic prestressing unit for prestressing
- Connection sleeves with DMS technology

## WE HELP YOU

T. +49 (0) 3 88 52 – 658-0  
info@muermann.eu



## OUR PRODUCTS

**STRUCTURAL BEARINGS** guarantee long-lasting protection for bridges. **Pot bearings** are used if controlled load transmission between superstructure and foundation is the aim. On the one hand, **spherical bearings** enable very large contortion with minimal friction and ensures controlled load distribution between different structural components. Large displacements can be absorbed by **deformation bearings**. They provide an economical solution for small and medium loads, displacements and distortions.

**EXPANSION AND TRANSITION JOINTS** safely bridge gaps in roadways and footpaths. Any movement in the bridge must be absorbed without strain. For varying expansion and load cases a range of roadway joints is on hand.

## WE SUPPORT YOU

With our services we offer you advice, installation, inspection, maintenance and renovation by way of static and dynamic analyses and design planning. Further services and products, including special solutions, are available on request.

## The benefits at a glance

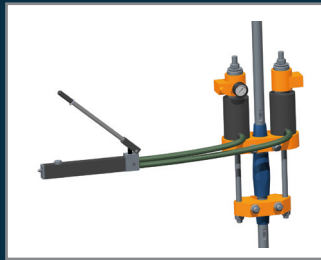
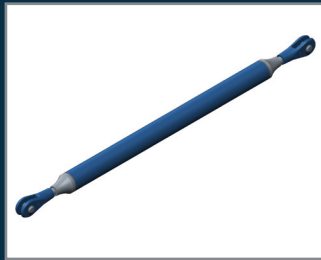
- For high vertical and horizontal load absorption
- No product-related restriction in horizontal displacement
- Simple installation
- 50 years service life
- High absorption of contortion through rotation

## WE HELP YOU

T. +49 (0) 79 03 – 93 26-0  
kontakt@schreiber-bruecken.de

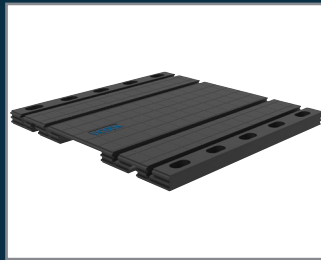
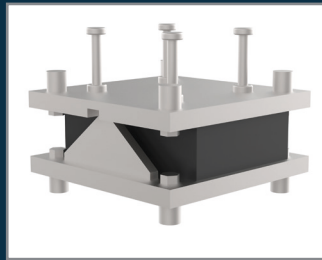
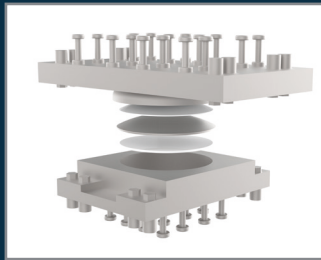
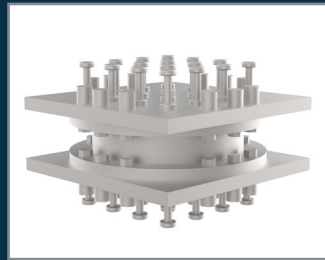


## MÜRMANN PRODUCT PORTFOLIO FOR BRIDGES



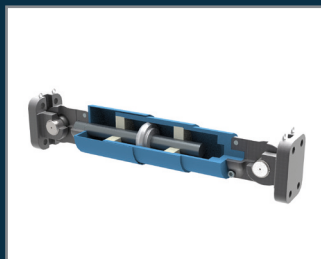
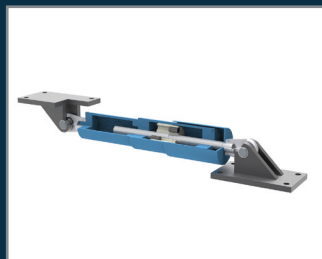
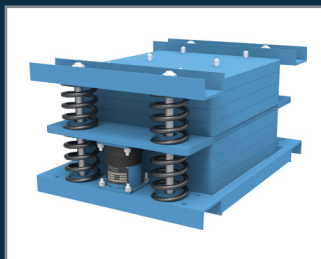
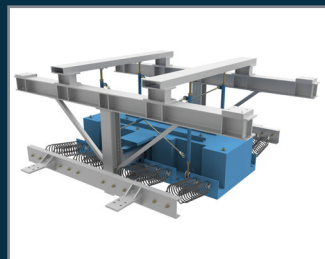
[www.muermann.eu](http://www.muermann.eu)

## SCHREIBER PRODUCT PORTFOLIO FOR BRIDGES



[www.schreiber-bruecken-dehntechnik.de](http://www.schreiber-bruecken-dehntechnik.de)

## VICODA PRODUCT PORTFOLIO FOR BRIDGES



[www.vicodagroup.com](http://www.vicodagroup.com)

VICODA GMBH

### OUR PRODUCTS

**TUNED MASS DAMPERS** protect bridges reliably from undesirable vibrations caused by wind, pedestrians, traffic or earthquakes. For this purpose, systems for vibration control are custom designed then manufactured. Horizontally and vertically functioning tuned mass dampers are implemented. Various concepts are available: passive, semi-active and active systems.

**SHOCK TRANSMISSION UNITS** connect different structural components rigidly to each other when high dynamic loads suddenly occur (e.g. earthquake). In the case of slowly applied stresses (e.g. temperature swings) they enable free displacement.

### WE SUPPORT YOU

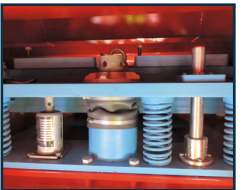
For the application of the respective products we offer you vibration measurement onsite, dynamic structural analyses and seismic designs, installation and fine tuning, as well as monitoring systems.

#### The benefits at a glance

- Freedom from maintenance
- National and international approvals
- Long life (> 50 years)
- High security
- Fulfilment of special requests

### WE HELP YOU

T. +49 (0) 42 81 – 98 59-0  
[info@vicoda-gmbh.com](mailto:info@vicoda-gmbh.com)



## CONTACT

### **VICODA GMBH | GERMANY**

Gerhard-Liesegang-Straße 1  
27404 Zeven  
P. O. box 1357  
27393 Zeven

T. | +49 (0) 42 81 – 98 59-0

M. | [info@vicoda-gmbh.com](mailto:info@vicoda-gmbh.com)

[www.vicodagroup.com](http://www.vicodagroup.com)

**A LISEGA Group Company**

© 2018 VICODA GMBH. All rights reserved. All information without guarantee.