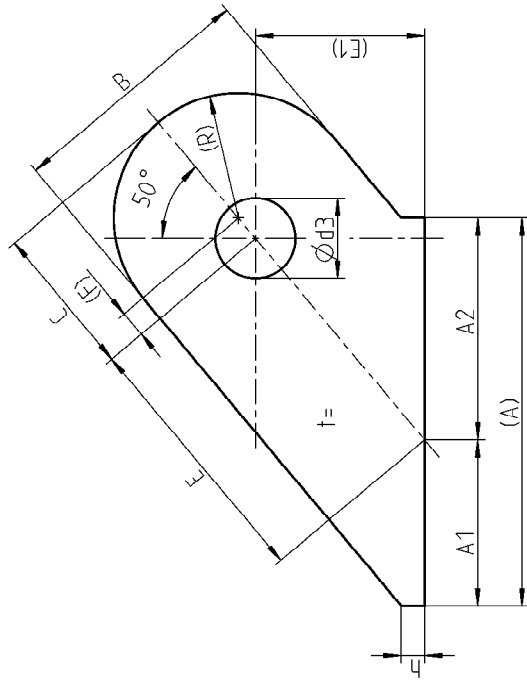


DNC-Index	Typ Type	A1	A2	(A)	B	C	d3	E	(E1)	F	R	h	t	Halbzeug		Gew. (kg) weight (kg)
														semi prod.		
01	6-6006 . - 50	9	19	28	18.5±0.2	11.5±0.2	6.6±0.1	31	20.0	2.25	9.25	4.5	4	BL.4x31x44 FM		0.02
02	6-6008 . - 50	14	25	39	25.0±0.2	15.5±0.2	8.6±0.1	34	22.0	3	12.5	4.5	5	BL.5x36.5x55 FM		0.05
03	6-6010 . - 50	20	30	50	32.0±0.3	19.5±0.2	10.6±0.1	39	25.0	3.5	16	4.5	6	BL.6x43.5x68.5 FM		0.10
04	6-6012 . - 50	24	34	58	37.0±0.5	22.5±0.3	12.7±0.2	47	30.0	4	18.5	4.5	8	BL.8x51.5x81.5 FM		0.15
05	6-6016 . - 50	35	45	80	51.0±0.5	31.0±0.4	16.8±0.3	59	38.0	5.5	25.5	5.0	10	BL.10x67x110 FM		0.30
06	6-6020 . - 50	44	56	100	64.0±0.5	39.0±0.4	20.8±0.3	70	45.0	7	32	6.0	12	BL.12x81.5x135 FM		0.60
07	6-6024 . - 50	51	66	117	75.0±0.5	46.0±0.4	25.0±0.4	81	52.0	8.5	37.5	7.5	15	BL.15x95x157 FM		1.00
08	6-6030 . - 50	62	80	142	91.0±0.5	56.0±0.4	31.0±0.4	96	61.5	10.5	45.5	9.0	20	BL.20x114x189 FM		1.90
09	6-6036 . - 50	75	99	174	112.0±0.5	68.0±0.4	36.0±0.4	118	76.0	12	56	10.5	22	BL.22x140x231 FM		3.20
10	6-6042 . - 50	92	118	210	135.0±0.5	82.0±0.4	43.0±0.4	140	90.0	14.5	67.5	11.5	25	BL.25x167x278 FM		5.20
11	6-6048 . - 50	101	131	232	149.0±0.5	91.0±0.4	48.0±0.4	156	100.5	16.5	74.5	13.5	30	BL.30x185.5x308 FM		7.60
12	6-6056 . - 50	119	155	274	176.0±0.5	107.0±0.4	56.0±0.4	187	120.0	19	88	16.5	35	BL.35x220.5x365 FM		12.60
13	6-6064 . - 50	136	177	313	207.0±0.5	122.0±0.4	64.5±0.5	210	135.0	21.5	100.5	18.5	40	BL.40x249.5x414 FM		18.50
14	6-6072 . - 50	152	198	350	225.0±0.5	137.0±0.5	73.5±0.5	226	145.5	24.5	112.5	21.0	50	BL.50x274x457 FM		28.00
15	6-6080 . - 50	171	220	391	251.0±0.8	153.0±0.7	81.5±0.6	252	162.0	27.5	125.5	22.0	55	BL.55x305.5x511 FM		38.50
16	6-6090 . - 50	195	250	445	286.0±0.8	174.0±0.7	91.5±0.6	280	180.0	31	143	25.0	60	BL.60x343x577 FM		54.00
17	6-6000 . - 50	212	274	486	312.0±1.0	189.0±0.8	99.5±0.6	319	205.0	33	156	28.0	70	BL.70x382.5x638 FM		77.00



Blechtoleranzklasse A gemäß EN 10029
plate tolerances class A acc. to EN 10029

* Material gemäß: Bauaufsichtliche Zulassung Nr. Z-14.4-441
Material acc.: Bauaufsichtliche Zulassung No. Z-14.4-441



Artikel Nr. Art. No.	Bezeichnung Description	Teil Part	Halbzeug Semi-product	DNC Ind.	DIN EN	Werkstoff Material	DIN EN 10229	Zeichnungs Nr. Drawing No.
freigegeben/released								
Freigabezeitpunkt / release status								
m-connect								
Typ 6-60... -50								
GM-Level:								
General toler.								
Scale								
Freimaße								
DIN 7168-m								
Name								
Date								
established								
checked								
AV, GM, BNT								
No. / Revision								
Zeichnungs Nr. / Drawing no.								
Bl./Page								
Rev.								
-entwurfsseriennummer / Serial no.								
v.								



350054-3

1/1

0