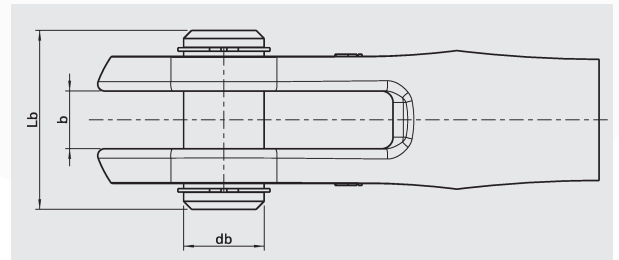


DATENBLATT

DRUCKSTABSYSYSTEM 560



Systemgröße	db [mm]	b [mm]	Lb [mm]	Verstellung je Gabelkopf V/2 [mm]
M10	10	10,0	26,0	± 8,0
M12	12	12,0	31,0	± 10,0
M16	16	17,0	41,0	± 12,5
M20	20	20,0	50,0	± 12,5
M24	24	22,5	58,0	± 15,0
M27	27	24,5	64,5	± 15,0
M30	30	27,5	72,5	± 15,0
M36	36	33,0	85,5	± 20,0
M42	42	38,0	99,5	± 25,0
M48	48	43,0	112,0	± 25,0
M52	52	48,0	122,0	± 27,5
M56x4	56	53,0	138,0	± 30,0
M60x4	60	58,5	148,5	± 32,5
M64x4	64	58,5	154,0	± 35,0
M72x4	72	68,5	177,0	± 40,0
M76x4	76	73,5	188,0	± 40,0
M80x4	80	73,5	194,0	± 40,0
M85x4	85	78,5	206,0	± 42,5
M90x4	90	83,5	218,0	± 45,0
M95x4	95	88,5	227,0	± 45,0
M100x4	100	93,5	237,0	± 50,0

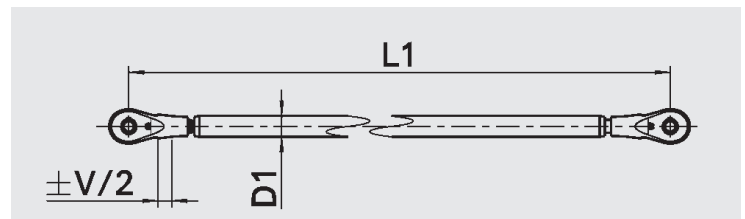


DATENBLATT

DRUCKSTABSYSTEM 560

Ausführung mit Vollstab

Systemgröße	Typ	L1min [mm]	L1max [mm]	D1 [mm]	Gewicht [kg]	
					L1min [mm]	per 100 mm Stab
M10	6-N1210	125,0	600,0	± 16,0	0,20	0,15
M12	6-N1212	145,0	750,0	± 20,0	0,40	0,25
M16	6-N1216	185,0	750,0	± 24,0	0,90	0,35
M20	6-N1220	215,0	900,0	± 30,0	1,70	0,55
M24	6-N1224	245,0	1000,0	± 36,0	2,60	0,80
M27	6-N1227	265,0	1000,0	± 36,0	2,80	0,80
M30	6-N1230	285,0	1500,0	± 48,0	4,70	1,40
M36	6-N1236	345,0	1700,0	± 56,0	7,80	2,00
M42	6-N1242	405,0	1900,0	± 64,0	13,50	2,50
M48	6-N1248	450,0	2000,0	± 72,0	19,00	3,20
M52	6-N1252	500,0	2000,0	± 85,0	25,00	4,45
M56x4	6-N1256	525,0	2600,0	± 90,0	30,00	5,00
M60x4	6-N1260	560,0	2600,0	± 100,0	38,00	6,00
M64x4	6-N1264	600,0	2800,0	± 100,0	47,00	6,00
M72x4	6-N1272	665,0	3100,0	± 110,0	66,00	7,50
M76x4	6-N1276	700,0	3100,0	± 120,0	75,00	9,00
M80x4	6-N1280	720,0	3200,0	± 120,0	88,00	9,00
M85x4	6-N1285	760,0	3200,0	± 135,0	100,00	11,00
M90x4	6-N1290	800,0	3600,0	± 135,0	126,00	11,00
M95x4	6-N1295	825,0	3600,0	± 150,0	145,00	14,00
M100x4	6-N1200	865,0	3900,0	± 150,0	169,00	14,00



Ausführung mit Rohr

Systemgröße	Typ	L2min [mm]	L2max [mm]	D2 [mm]	Gewicht [kg]	
					L2min [mm]	per 100 mm Rohr
M10	6-N1410	210,0	1250,0	33,7	1,00	0,24
M12	6-N1412	245,0	1500,0	42,4	1,50	0,31
M16	6-N1416	315,0	1800,0	48,3	2,50	0,44
M20	6-N1420	360,0	2500,0	60,3	4,50	0,56
M24	6-N1424	415,0	2900,0	76,1	8,00	0,71
M27	6-N1427	450,0	2900,0	82,5	12,00	0,96
M30	6-N1430	485,0	3100,0	88,9	15,00	1,03
M36	6-N1436	580,0	3400,0	101,6	25,00	1,49
M42	6-N1442	700,0	3900,0	114,3	40,00	2,10
M48	6-N1448	765,0	4500,0	139,7	60,00	2,60
M52	6-N1452	860,0	4500,0	159,0	80,00	2,98
M56x4	6-N1456	890,0	4800,0	168,3	90,00	3,16
M60x4	6-N1460	970,0	4800,0	171,0	105,00	3,21
M64x4	6-N1464	1010,0	5500,0	177,8	120,00	4,90
M72x4	6-N1472	1130,0	5900,0	193,7	165,00	5,58
M76x4	6-N1476	1200,0	5900,0	203,0	195,00	5,87
M80x4	6-N1480	1210,0	6200,0	219,1	225,00	6,37
M85x4	6-N1485	1310,0	6200,0	241,0	260,00	8,87
M90x4	6-N1490	1350,0	7200,0	244,5	310,00	9,01
M95x4	6-N1495	1425,0	7200,0	267,0	365,00	9,90
M100x4	6-N1400	1465,0	7500,0	273,0	420,00	10,14

