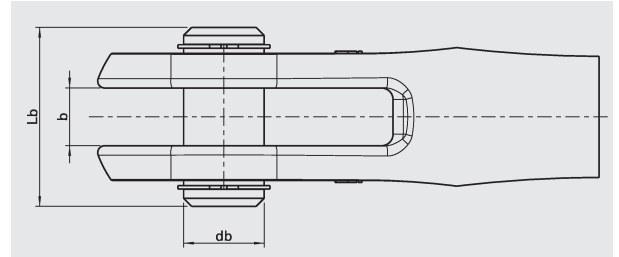


DATENBLATT

DRUCKSTABSYSYSTEM 460 EDELSTAHL

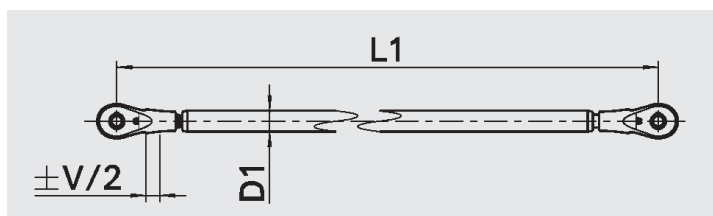
Systemgröße	ødb [mm]	b [mm]	Lb [mm]	Verstellung je Gabelkopf V/2 [mm]
M10	10	8,0	24,0	± 8,0
M12	12	10,0	29,0	± 10,0
M16	16	12,0	36,0	± 12,5
M20	20	14,0	44,0	± 12,5
M24	24	17,5	53,0	± 15,0
M30	30	22,5	68,0	± 15,0
M36	35	25,0	78,0	± 20,0
M42	42	28,0	90,0	± 25,0
M48	47	33,0	102,0	± 25,0
M56x4	55	38,0	117,0	± 30,0
M64x4	63	43,5	133,0	± 35,0
M72x4	72	53,5	156,0	± 40,0
M80x4	80	58,5	173,0	± 40,0
M90x4	90	63,5	192,0	± 45,0
M100x4	98	73,5	210,0	± 50,0



Ausführung mit Vollstab



Systemgröße	Typ	L1min [mm]	L1max [mm]	D1 [mm]	Gewicht [kg]	
					L1min [mm]	per 100 mm Stab
M10	6-1210	120	600	16	0,20	0,15
M12	6-1212	140	750	20	0,40	0,25
M16	6-1216	180	750	24	0,90	0,35
M20	6-1220	212	900	30	1,70	0,55
M24	6-1224	240	1100	36	2,60	0,80
M30	6-1230	272	1500	48	4,70	1,40
M36	6-1236	326	1700	56	7,80	2,00
M42	6-1242	396	1900	64	13,50	2,50
M48	6-1248	430	2000	72	19,00	3,20
M56x4	6-1256	502	2600	90	30,00	5,00
M64x4	6-1264	570	2800	100	47,00	6,00
M72x4	6-1272	636	3100	110	66,00	7,50
M80x4	6-1280	682	3200	120	88,00	9,00
M90x4	6-1290	766	3600	135	126,00	11,00
M100x4	6-1200	836	3900	150	169,00	14,00



Ausführung mit Rohr



Systemgröße	Typ	L2min [mm]	L2max [mm]	D2 [mm]	Gewicht [kg]	
					L2min [mm]	per 100 mm Rohr
M10	6-1410	200	1250	33,7	0,70	0,24
M12	6-1412	236	1500	42,4	1,20	0,31
M16	6-1416	304	1800	48,3	2,30	0,44
M20	6-1420	354	2500	60,3	4,20	0,56
M24	6-1424	408	2900	76,1	7,50	0,71
M30	6-1430	468	3100	88,9	12,80	1,03
M36	6-1436	560	3400	101,6	20,30	1,49
M42	6-1442	684	3900	114,3	33,00	2,10
M48	6-1448	744	4500	139,7	50,00	2,60
M56x4	6-1456	862	4800	168,3	83,00	3,16
M64x4	6-1464	980	5500	177,8	114,00	4,90
M72x4	6-1472	1096	5900	193,7	156,00	5,58
M80x4	6-1480	1170	6200	219,1	212,00	6,37
M90x4	6-1490	1310	7200	244,5	297,00	9,01
M100x4	6-1400	1436	7500	273,0	398,00	10,14

