

Changes in rev. 3.0.1 compared to rev. 3.0.0

PluginLicad2010:

- Broken data transfer from S3D to LICAD fixed

Catalog Lisega2010:

- Type 57 revised: Only one part for one part number, OD and E editable

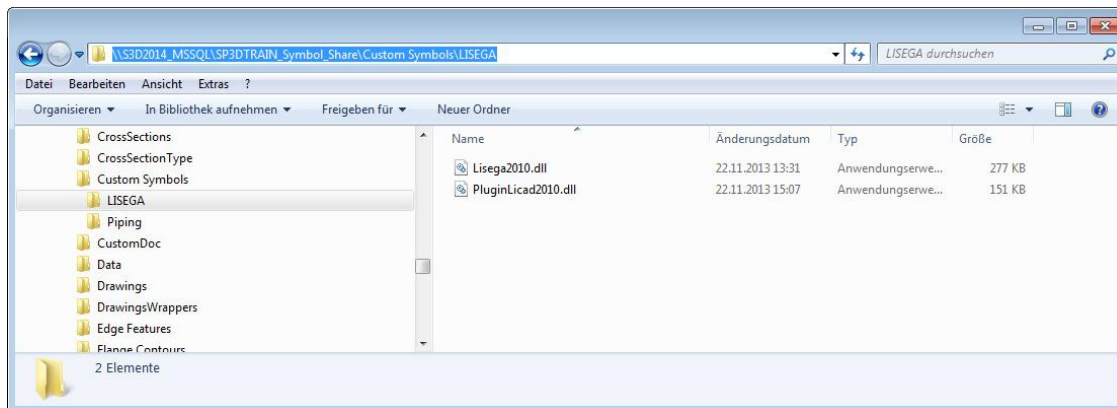
Installation

Program files

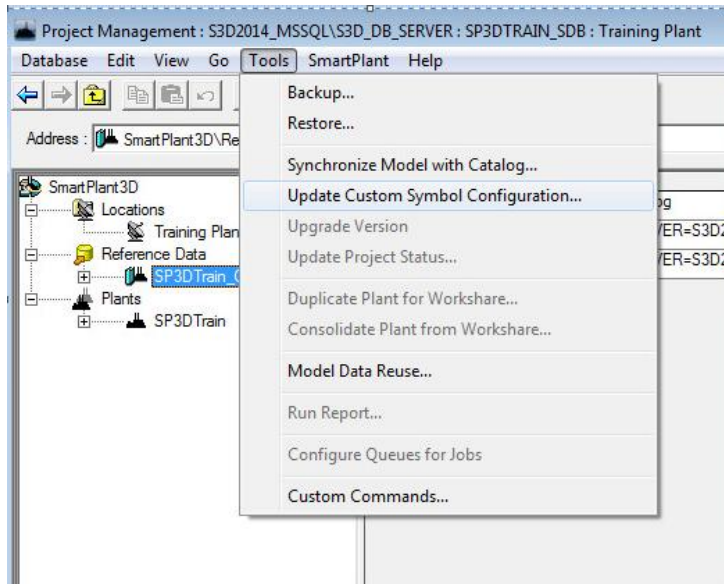
Copy the folder “001 - LISEGA” into the “Custom Symbols” folder of the symbol share and rename it to “LISEGA”

The following two file are placed in that folder:

- Lisega2010.DLL
- PluginLicad2010.DLL



Open the S3D Project Management tool, select the catalog database and run the command “Update Custom Symbol Configuration ...” in the tools menu.



This will add the required information about the two new DLL files to the S3D configuration so that S3D will recognize the files the next time it's started.

Bulkloading reference data

Create new LISEGA catalog Lisega2010

Hint: For updating already existing catalog HS_Lisega2010 refer to chapter “Update existing LISEGA catalog HS_Lisega2010 Rev. 2a”

For updating already existing catalog Lisega2010 refer to chapter “Update existing LISEGA catalog Lisega2010 Rev. 3.0.0”

Run the bulkload utility to read in the catalog data in “APPEND” mode and check the option “Update Object Type Hierarchy and Catalog Views”.

The bulkload files are placed in “002 - bulkload catalog lisega2010\ Create new catalog Lisega2010”.

Reference data: Lisega2010.xlsx

Codelist: Lisega2010_CodeList.xlsx

Bulkload

Reference data to bulkload

Excel files:

11-31 bulkload hs_lisega2010\HS_Lisega2010_Rev_3_0b_V2014.xlsx

Excel codelist files:

11-31 bulkload hs_lisega2010\HS_Lisega2010_Rev_3_0b_CodeList.xlsx

Bulkload mode

☐ Bulkload to a new catalog

☒ Append to existing catalog

☐ Add, modify, or delete records in existing catalog

☐ Delete and replace records in existing catalog

☐ Create flavors ☒ Update Object Type Hierarchy and Catalog Views

Catalog information

Database Type: MSSQL

Database server name: S3D2014_MSSQL\S3D_DB_SERV

Database name: SP3DTrain_CDB

Schema information

Catalog schema server: S3D2014_MSSQL\S3D_DB_SERVER

Catalog schema database: SP3DTrain_CDB_SCHEMA

Log file:

sktop\Rev. 3.0b 2013-11-11\2013-11-31 bulkload hs_lisega2010\SP3DTrain_CDB.log

Symbol and custom program file location:

\\S3D2014_MSSQL\SP3DTRAIN_Symbol_Share

Bulkload 22.11.2013 15:25

After a successfully bulkload the parts can be found in the catalog hierarchy under “Supports\Parts\LISEGA 2010\...”

Update existing LISEGA catalog HS_Lisega2010 Rev. 2a

ATTENTION: The revision 2a of the LISEGA catalog HS_Lisega2010 must exist in the catalog database. Prior revisions of the catalog HS_Lisega2010 will not be supported by the update to revision 3.

The update to revision 2a can be found on LISEGA web-site.

Run the bulkload utility in “Delete and Replace” mode and check the option “Update Object Type Hierarchy and Catalog Views”.

Use the bulkload files in the folder “002 - bulkload catalog lisega2010\Update existing catalog Lisega2010\Rev_2a_To_Rev_3_0_0”

Update existing LISEGA catalog Lisega2010 Rev. 3.0.0

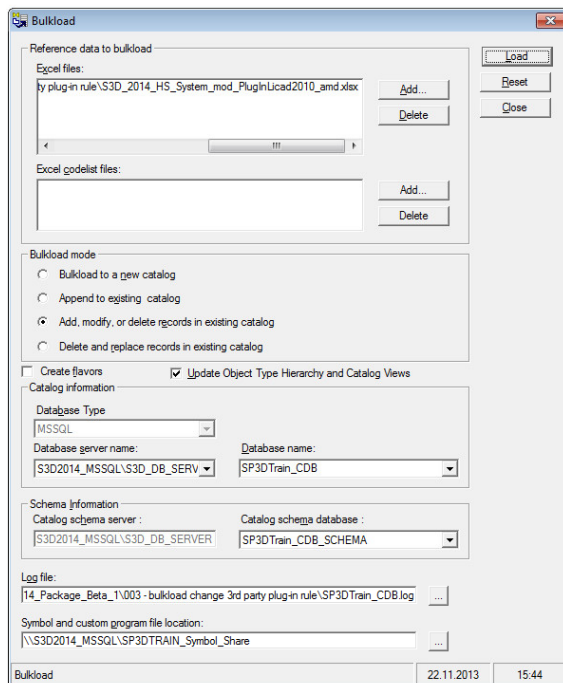
Run the bulkload utility in “Add, Modify & Delete” mode and check the option “Update Object Type Hierarchy and Catalog Views”.

Use the bulkload file in the folder “002 - bulkload catalog lisega2010\Update existing catalog Lisega2010\Rev_3_0_0_To_Rev_3_0_1”

Enable LISEGA plug-in

HINT: Please keep in mind that LICAD V 9.4 must be installed as well to use the plug-in.
(The LICAD OLE-server is included in the LICAD installation package.)

Run the bulkload utility to change the rule which plug-in should be started when clicking on the button “Start 3rd Part app”. By default Intergraph Example plug-in will be started.



Use the bulkload file
“S3D_2014_HS_System_mod_PluginLicad2010_amd.xl
sx” to change the rule. The file can be found in the
folder “003 - bulkload change 3rd party plug-in rule”.

SmartPlant 3D 2014 - .NET security settings

What is needed to be configured depends on the installed framework version 4 or 4.5!

The configuration described below is necessary, if only the version 4.0 installed. With the version 4.5 this configuration can normally be skipped.

Details see: <http://msdn.microsoft.com/en-us/library/dd409252%28v=vs.110%29.aspx>

The .NET Framework 4 doesn't use CAS anymore by default. You need to set an option in the application config file to run assemblies on a network share with full trust. CasPol isn't needed anymore.

Quote:

The <loadFromRemoteSources> element lets you specify that the assemblies that would have run partially trusted in earlier versions of the .NET Framework are to be run fully trusted in the .NET Framework 4 and later versions. By default, remote assemblies do not run in the .NET Framework 4 and later. To run a remote assembly, you must either run it as fully trusted or create a sandboxed AppDomain in which to run it.

Example of the configuration file "S3DHost.exe.config" for Smart3D:

```
<configuration>
  <startup useLegacyV2RuntimeActivationPolicy="true">
    <supportedRuntime version="v4.0" sku=".NETFramework,Version=v4.0" />
  </startup>
  <runtime>
    <assemblyBinding xmlns="urn:schemas-microsoft-com:asm.v1">
      <!-- The following line is modified by RegisterApps. So, changes here may impact RegisterApps -->
      <probing privatePath="SxS\Telerik\Assemblies\Debug;Assemblies\Release" />
    </assemblyBinding>
    <loadFromRemoteSources enabled="true" />
  </runtime>
</configuration>
```

Quote:

In the .NET Framework 4.5, assemblies on local network shares are run as full trust by default; you do not have to enable the <loadFromRemoteSources> element.